



Crystal Court, Aston Cross
Birmingham, B6 5RQ

Telephone 0121 687 3400
Facsimile 0121 687 3401
E-mail: office@pi.nhs.uk
Website: www.pi.nhs.uk

Director
Professor Jason Gardosi MD FRCOG FRCSED

Direct Dial: 0121 687 3500
E-mail: jason.gardosi@pi.nhs.uk

2 December 2010

**Perinatal & Infant Mortality - 2009 Unit Report:
SHREWSBURY AND TELFORD HOSPITAL NHS TRUST**

This report provides the latest update of stillbirth, perinatal and infant mortality rates for your Trust, as well as for the West Midlands and England & Wales. The report is delayed because of the late release by ONS of the 2009 births and deaths extracts which we cross check our cases with, and the Vital Statistics national reference data, which became available only in November this year.

The report includes

- yearly rates and three-year moving averages, summarised for stillbirths and infant deaths, as well as early neonatal, neonatal and perinatal death rates for comparison with other sources;
- 'corrected' mortality rates, after exclusion of congenital anomalies and pre-viable births;
- main categories / causes of stillbirths and infant deaths for your unit and the West Midlands

Additional information relevant to your PCT's maternity population has been presented in the respective Cluster reports which have been sent out earlier this year, and are available on www.pi.nhs.uk/pnm/clusterreports

As always, specific information relating to your unit is available on request (www.pi.nhs.uk/data). In addition, we are currently completing development of a web based interactive tool, and will be able to display mortality rates and trends on-line in the New Year.

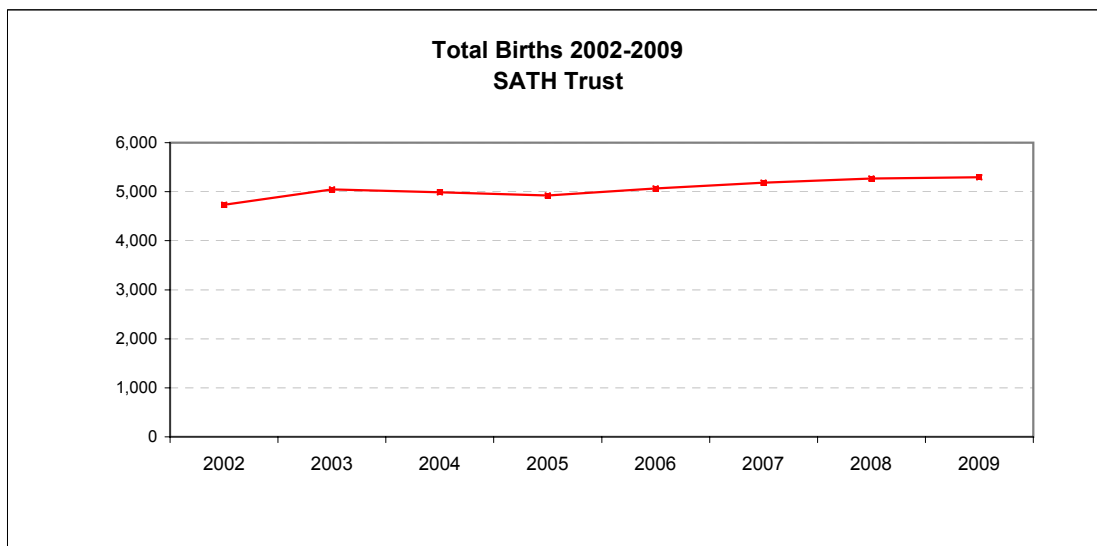
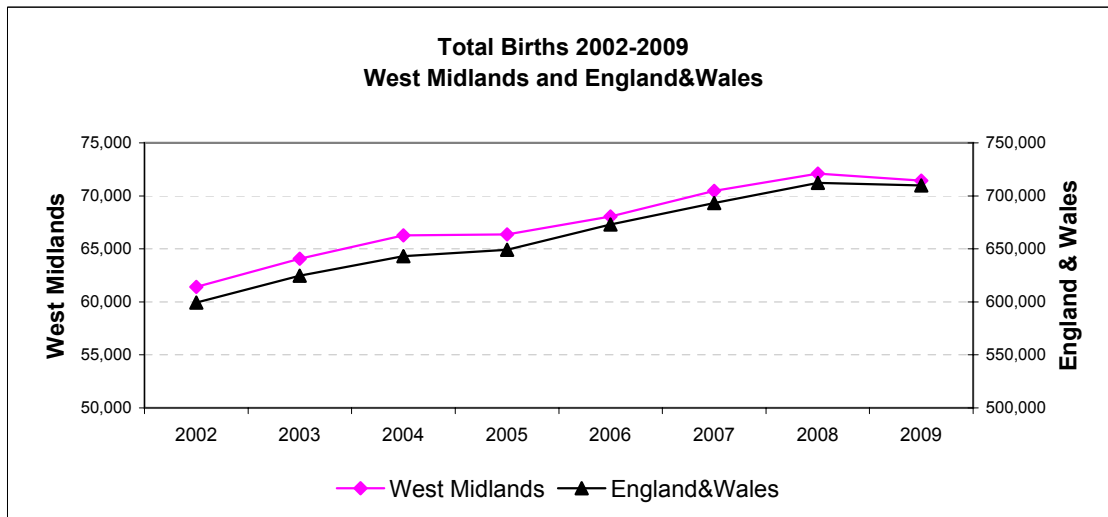
With sincere regards,

Professor Jason Gardosi
Director, Perinatal Institute

1. Births: Shrewsbury And Telford Hospital NHS Trust, WM and E & W 2002-2009

Source: ONS

	2002	2003	2004	2005	2006	2007	2008	2009
England&Wales	599,279	624,816	643,026	649,094	672,966	693,356	712,328	709,936
West Midlands	61,417	64,079	66,285	66,351	68,063	70,476	72,110	71,452
SATH Trust	4,736	5,050	4,988	4,926	5,069	5,184	5,271	5,292



2 A: Stillbirths 2002-2009

Numbers

	2002	2003	2004	2005	2006	2007	2008	2009
England and Wales*	3365	3565	3517	3473	3590	3585	3617	3688
West Midlands	391	395	383	403	392	398	416	414
SATH Trust	28	32	32	24	30	28	31	29

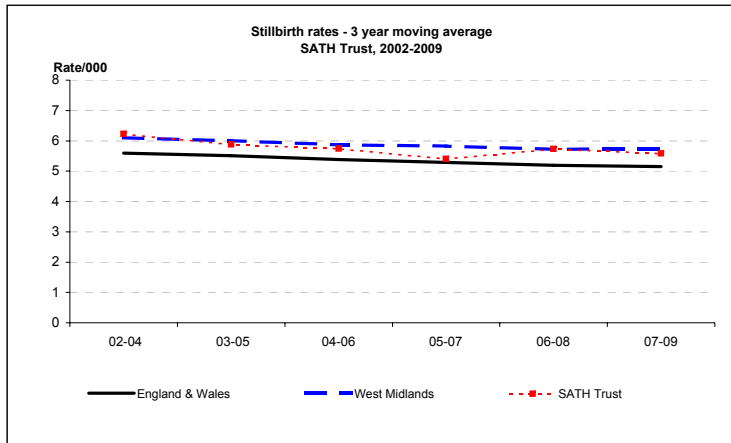
Rate/1,000

	2002	2003	2004	2005	2006	2007	2008	2009	2009 CI
England and Wales*	5.6	5.7	5.5	5.4	5.3	5.2	5.1	5.2	5.0 - 5.4
West Midlands	6.4	6.2	5.8	6.1	5.8	5.6	5.8	5.8	5.3 - 6.4
SATH Trust	5.9	6.3	6.4	4.9	5.9	5.4	5.9	5.5	3.8 - 7.9

Still birth rates - 3 year moving averages - PDN

	02-04	03-05	04-06	05-07	06-08	07-09
England & Wales	5.6	5.5	5.4	5.3	5.2	5.1
West Midlands	6.1	6.0	5.9	5.8	5.7	5.7
SATH Trust	6.2	5.9	5.7	5.4	5.7	5.6

*ONS



2 B: Stillbirths 2002-2009 - CORRECTED

(Excluding major congenital anomalies)

Numbers

	2002	2003	2004	2005	2006	2007	2008	2009
West Midlands	282	284	279	311	268	284	290	259
SATH Trust	19	24	24	20	20	22	18	19

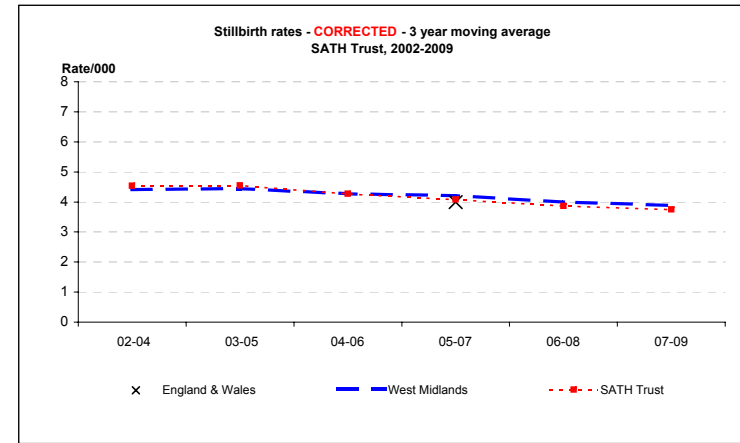
Rate/1,000

	2002	2003	2004	2005	2006	2007	2008	2009	2009 CI
England and Wales**				4.1	4.1	3.9			
West Midlands	4.6	4.4	4.2	4.7	3.9	4.0	4.0	3.6	3.2 - 4.1
SATH Trust	4.0	4.8	4.8	4.1	3.9	4.2	3.4	3.6	2.3 - 5.6

3 year moving averages

	02-04	03-05	04-06	05-07	06-08	07-09
England & Wales				4.0		
West Midlands	4.4	4.4	4.3	4.2	4.0	3.9
SATH Trust	4.5	4.5	4.3	4.1	3.9	3.7

**CEMACH



x = England & Wales 3 y adjusted average from CEMACH

3. Stillbirths, 2002 -2009: Classification in main categories

Categories based on ReCoDe classification

	2002	2003	2004	2005	2006	2007	2008	2009
Births	4736	5050	4988	4926	5069	5184	5271	5292

MAIN CATEGORIES

Numbers

Congenital anomaly	2	4	4	2	2	3	8	9
Fetal growth restriction	13	10	11	12	15	13	12	8
Placenta/Umbilical cord	4	11	8	3	4	4	3	2
Maternal conditions	2	0	1	1	1	0	0	2
Infection	0	0	0	2	0	1	2	1
Intrapartum asphyxia	0	0	1	0	0	0	0	0
Miscellaneous	3	3	0	1	5	2	4	0
Unclassified / Unexplained	4	4	7	3	3	5	2	7

3-year moving averages

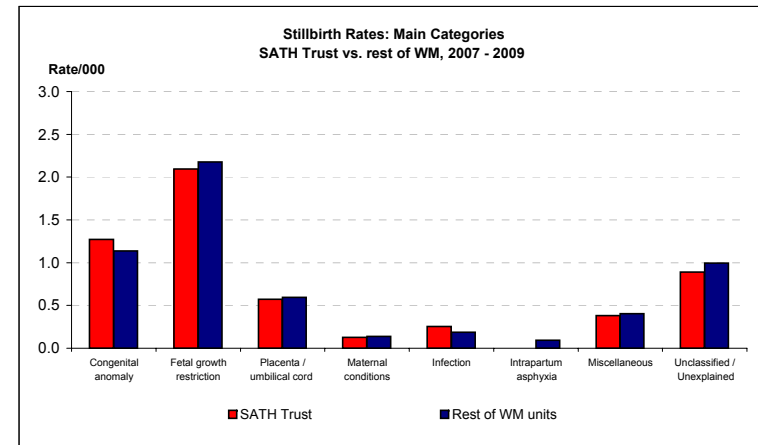
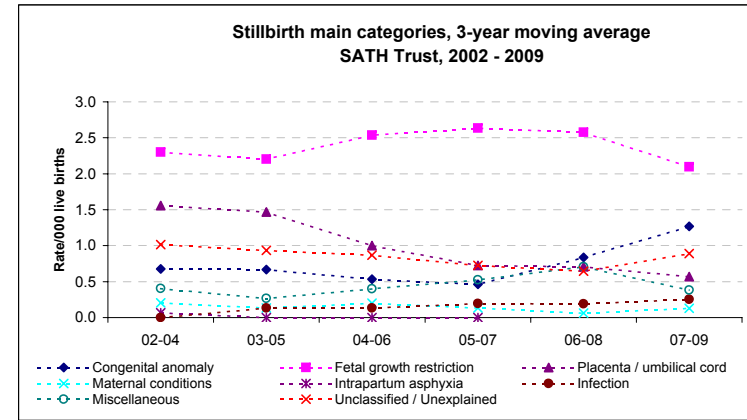
	02-04	03-05	04-06	05-07	06-08	07-09
Congenital anomaly	0.7	0.7	0.5	0.5	0.8	1.3
Fetal growth restriction	2.3	2.2	2.5	2.6	2.6	2.1
Placenta / umbilical cord	1.6	1.5	1.0	0.7	0.7	0.6
Maternal conditions	0.2	0.1	0.2	0.1	0.1	0.1
Infection	0.0	0.1	0.1	0.2	0.2	0.3
Intrapartum asphyxia	0.1	0.1	0.1	0.0	0.0	0.0
Miscellaneous	0.4	0.3	0.4	0.5	0.7	0.4
Unclassified / Unexplained	1.0	0.9	0.9	0.7	0.6	0.9

Births 2007-9

SATH Trust 15,747
Rest of WM units 202,060

MAIN CATEGORIES - 2007-9

	No.	Rate	No.	Rate
Congenital anomaly	20	1.3	230	1.1
Fetal growth restriction	33	2.1	440	2.2
Placenta / umbilical cord	9	0.6	120	0.6
Maternal conditions	2	0.1	28	0.1
Infection	4	0.3	38	0.2
Intrapartum asphyxia	0	0.0	19	0.1
Miscellaneous	6	0.4	82	0.4
Unclassified / Unexplained	14	0.9	201	1.0



4 A: Infant Deaths 2002-2009

Numbers

	2002	2003	2004	2005	2006	2007	2008	2009
England and Wales*	3144	3274	3234	3217	3329	3309	3369	3312
West Midlands	407	476	419	423	407	422	458	455
SATH Trust	24	26	19	25	23	23	28	24

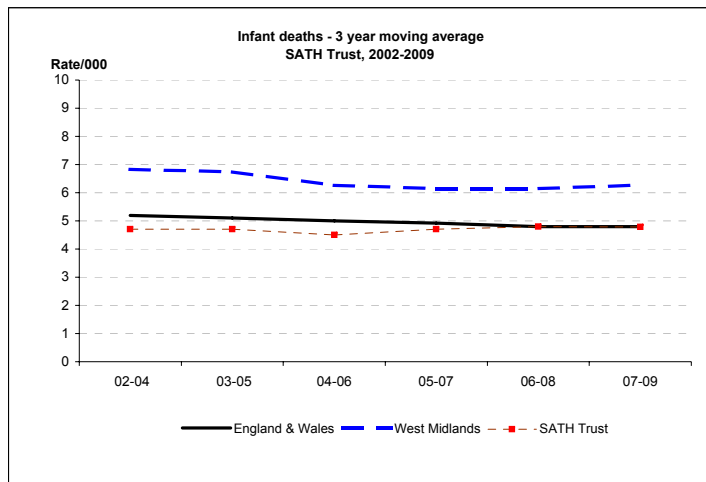
Rate/1,000

	2002	2003	2004	2005	2006	2007	2008	2009	2009 CI
England and Wales*	5.3	5.3	5.1	5.0	5.0	4.8	4.8	4.7	4.5 - 4.9
West Midlands	6.7	7.5	6.4	6.4	6.0	6.0	6.4	6.4	5.8 - 7.0
SATH Trust	5.1	5.2	3.8	5.1	4.6	4.5	5.3	4.6	3.1 - 6.8

Infant death rates - 3 year moving average - PDN

	02-04	03-05	04-06	05-07	06-08	07-09
England & Wales	5.2	5.1	5.0	4.9	4.8	4.8
West Midlands	6.8	6.7	6.3	6.1	6.1	6.3
SATH Trust	4.7	4.7	4.5	4.7	4.8	4.8

*ONS



4 B: Infant deaths 2002-2009 - CORRECTED

Corrected = excluding major congenital anomalies, <22 weeks gestation and <500g birthweight

Numbers

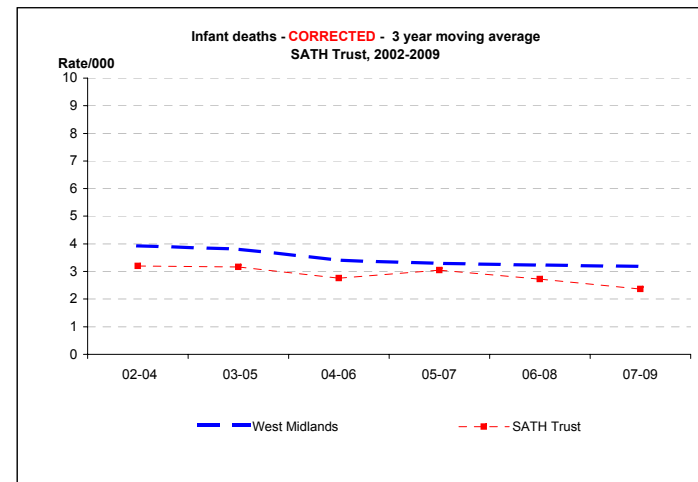
	2002	2003	2004	2005	2006	2007	2008	2009
West Midlands	238	274	236	235	208	228	240	211
SATH Trust	19	20	8	19	14	13	15	9

Rate/1,000

	2002	2003	2004	2005	2006	2007	2008	2009	2009 CI
West Midlands	3.9	4.3	3.6	3.6	3.1	3.3	3.3	3.0	2.6 - 3.4
SATH Trust	4.0	4.0	1.6	3.9	2.8	2.5	2.9	1.7	0.9 - 3.2

3 year moving averages

	02-04	03-05	04-06	05-07	06-08	07-09
West Midlands	3.9	3.8	3.4	3.3	3.2	3.2
SATH Trust	3.2	3.2	2.8	3.0	2.7	2.4



5. Infant Deaths, 2002-2009: main categories

Categories based on Fetal/Neonatal/Infant classification

	2002	2003	2004	2005	2006	2007	2008	2009
Live Births	4708	5018	4956	4902	5039	5156	5240	5263

MAIN CATEGORIES

Numbers

Congenital anomaly	5	6	6	6	5	8	9	9
Previabile	0	0	3	0	2	0	1	2
Pulmonary immaturity	5	5	5	5	8	8	5	5
Intrapartum asphyxia	3	5	1	1	2	2	2	3
Infection	5	3	3	5	4	1	6	2
SUDI	2	1	2	5	2	0	2	0
Miscellaneous	3	6	2	3	1	1	2	1
Unclassified	1	0	0	0	1	3	2	4

3-year moving averages

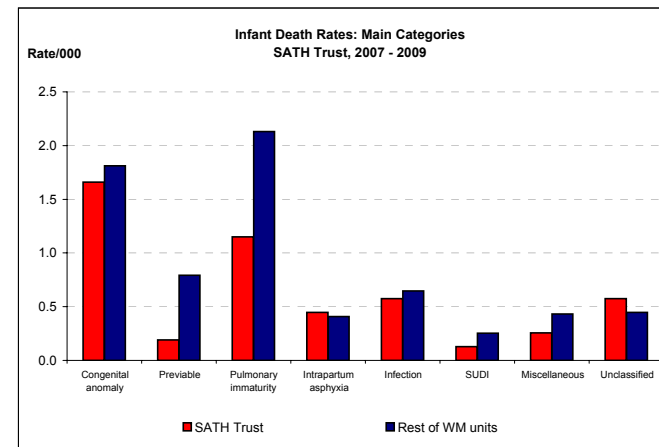
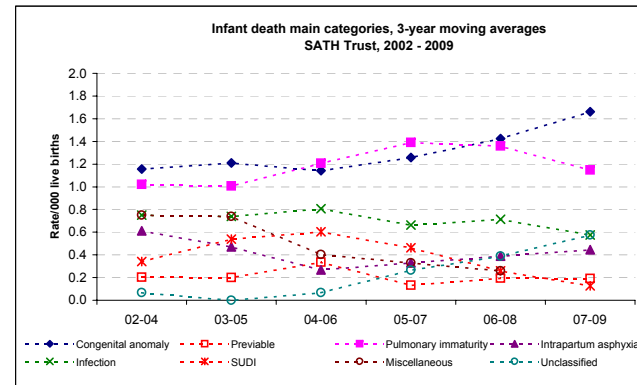
	02-04	03-05	04-06	05-07	06-08	07-09
Congenital anomaly	1.2	1.2	1.1	1.3	1.4	1.7
Previabile	0.2	0.2	0.3	0.1	0.2	0.2
Pulmonary immaturity	1.0	1.0	1.2	1.4	1.4	1.1
Intrapartum asphyxia	0.6	0.5	0.3	0.3	0.4	0.4
Infection	0.7	0.7	0.8	0.7	0.7	0.6
SUDI	0.3	0.5	0.6	0.5	0.3	0.1
Miscellaneous	0.7	0.7	0.4	0.3	0.3	0.3
Unclassified	0.1	0.0	0.1	0.3	0.4	0.6

Live Births 2007-9

SATH Trust	Rest of WM units
15,659	200,944

MAIN CATEGORIES - 2007-9

	No.	Rate	No.	Rate
Congenital anomaly	26	1.7	364	1.8
Previabile	3	0.2	159	0.8
Pulmonary immaturity	18	1.1	428	2.1
Intrapartum asphyxia	7	0.4	82	0.4
Infection	9	0.6	130	0.6
SUDI	2	0.1	51	0.3
Miscellaneous	4	0.3	87	0.4
Unclassified	9	0.6	90	0.4



6 A: Early Neonatal deaths 2002-2009

Early neonatal = birth to age 7 days

Numbers

	2002	2003	2004	2005	2006	2007	2008	2009
England and Wales*	1628	1726	1714	1681	1750	1762	1763	1715
West Midlands	234	266	255	270	245	268	258	246
SATH Trust	12	17	10	8	14	8	13	13

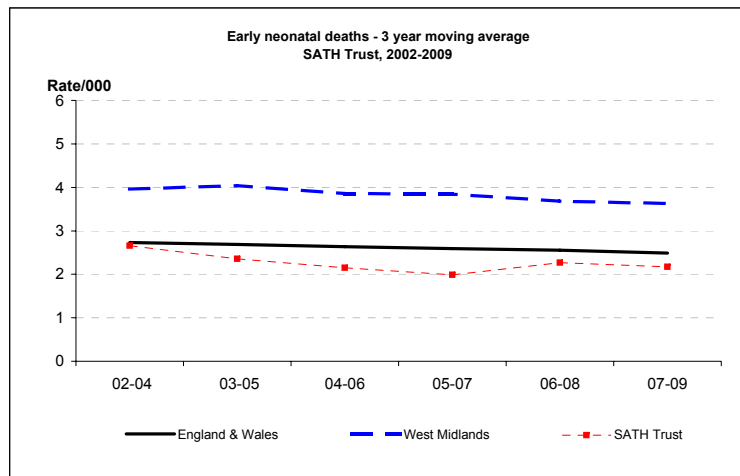
Rate/1,000

	2002	2003	2004	2005	2006	2007	2008	2009	2009 CI
England and Wales*	2.7	2.8	2.7	2.6	2.6	2.6	2.5	2.4	2.3 - 2.5
West Midlands	3.8	4.2	3.9	4.1	3.6	3.8	3.6	3.5	3.1 - 3.9
SATH Trust	2.5	3.4	2.0	1.6	2.8	1.6	2.5	2.5	1.4 - 4.2

3 year moving averages

	02-04	03-05	04-06	05-07	06-08	07-09
England & Wales	2.7	2.7	2.6	2.6	2.6	2.5
West Midlands	4.0	4.0	3.9	3.8	3.7	3.6
SATH Trust	2.7	2.4	2.1	2.0	2.3	2.2

*ONS



6 B: Early Neonatal Deaths 2002-2009 - CORRECTED

Corrected = excluding major congenital anomalies, <22 weeks gestation and <500g birthweight

Numbers

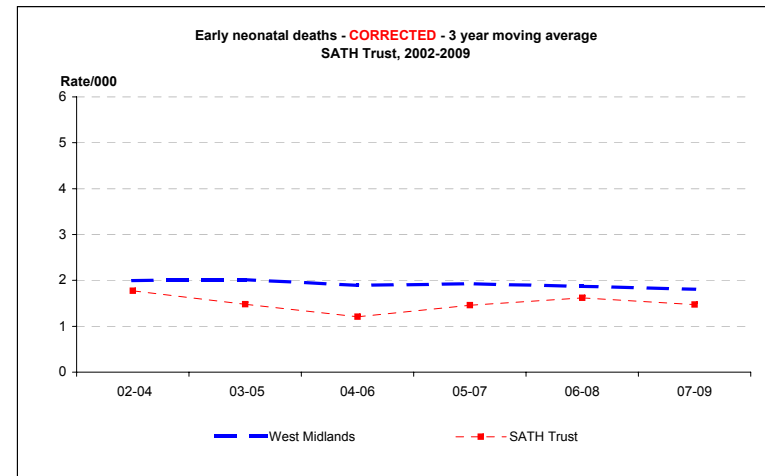
	2002	2003	2004	2005	2006	2007	2008	2009
West Midlands	118	134	129	131	117	144	130	110
SATH Trust	10	13	3	6	9	7	9	7

Rate/1,000

	2002	2003	2004	2005	2006	2007	2008	2009	2009 CI
West Midlands	1.9	2.1	2.0	2.0	1.7	2.1	1.8	1.5	1.3 - 1.9
SATH Trust	2.1	2.6	0.6	1.2	1.8	1.4	1.7	1.3	0.6 - 2.7

3 year moving averages

	02-04	03-05	04-06	05-07	06-08	07-09
West Midlands	2.0	2.0	1.9	1.9	1.9	1.8
SATH Trust	1.8	1.5	1.2	1.5	1.6	1.5



7 A: Neonatal deaths 2002-2009

Neonatal = birth to age 28 days

Numbers

	2002	2003	2004	2005	2006	2007	2008	2009
England and Wales*	2129	2234	2223	2205	2331	2269	2299	2251
West Midlands	294	329	314	327	316	316	321	321
SATH Trust	14	23	12	14	19	12	17	16

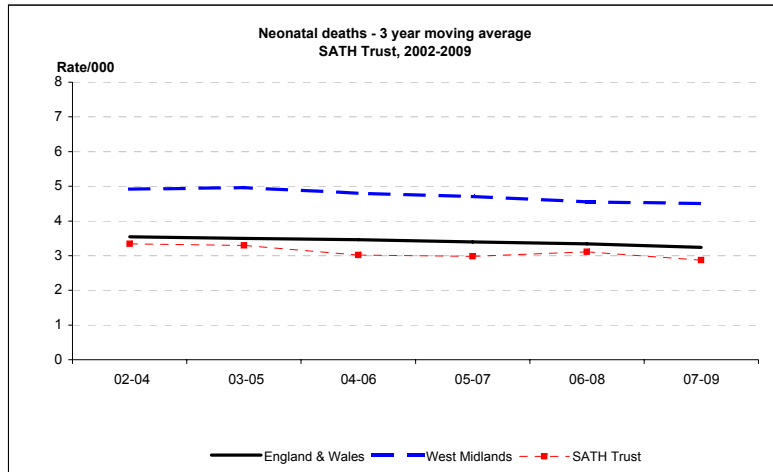
Rate/1,000

	2002	2003	2004	2005	2006	2007	2008	2009	2009 CI
England and Wales*	3.6	3.6	3.5	3.4	3.5	3.3	3.2	3.2	3.1 - 3.3
West Midlands	4.8	5.2	4.8	5.0	4.7	4.5	4.5	4.5	4.1 - 5.0
SATH Trust	3.0	4.6	2.4	2.9	3.8	2.3	3.2	3.0	1.9 - 4.9

3 year moving averages

	02-04	03-05	04-06	05-07	06-08	07-09
England & Wales	3.5	3.5	3.5	3.4	3.3	3.2
West Midlands	4.9	5.0	4.8	4.7	4.6	4.5
SATH Trust	3.3	3.3	3.0	3.0	3.1	2.9

*ONS



7 B: Neonatal Deaths 2002-2009 - CORRECTED

Corrected = excluding major congenital anomalies, <22 weeks gestation and <500g birthweight

Numbers

	2002	2003	2004	2005	2006	2007	2008	2009
West Midlands	157	176	166	172	168	172	168	149
SATH Trust	11	18	4	11	11	8	11	7

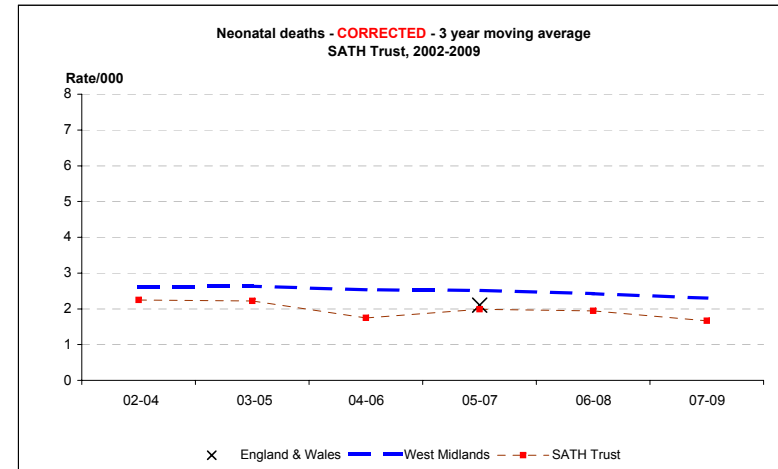
Rate/1,000

	2002	2003	2004	2005	2006	2007	2008	2009	2009 CI
England and Wales**				2.1	2.3	2.0			
West Midlands	2.6	2.8	2.5	2.6	2.5	2.5	2.3	2.1	1.8 - 2.5
SATH Trust	2.3	3.6	0.8	2.2	2.2	1.6	2.1	1.3	0.6 - 2.7

3 year moving averages

	02-04	03-05	04-06	05-07	06-08	07-09
England & Wales**				2.1		
West Midlands	2.6	2.6	2.5	2.5	2.4	2.3
SATH Trust	2.2	2.2	1.7	2.0	1.9	1.7

**CEMACH



x = England & Wales 3 y adjusted average from CEMACH

8 A: Perinatal Deaths 2002-2009

Perinatal = stillbirths and early neonatal deaths

Numbers

	2002	2003	2004	2005	2006	2007	2008	2009
England and Wales*	4993	5291	5231	5154	5340	5347	5380	5403
West Midlands	625	661	638	673	637	666	674	656
SATH Trust	40	49	42	32	44	36	44	42

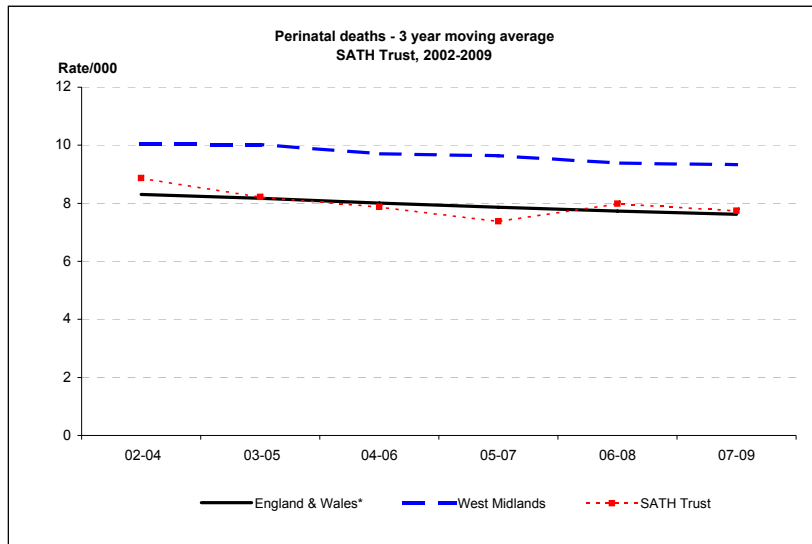
Rate/1,000

	2002	2003	2004	2005	2006	2007	2008	2009	2009 CI
England and Wales*	8.3	8.5	8.1	7.9	7.9	7.7	7.6	7.6	7.4 - 7.8
West Midlands	10.2	10.3	9.6	10.1	9.4	9.5	9.3	9.2	8.5 - 9.9
SATH Trust	8.4	9.7	8.4	6.5	8.7	6.9	8.3	7.9	5.9 - 10.7

3 year moving averages

	02-04	03-05	04-06	05-07	06-08	07-09
England & Wales*	8.3	8.2	8.0	7.9	7.7	7.6
West Midlands	10.0	10.0	9.7	9.6	9.4	9.3
SATH Trust	8.9	8.2	7.9	7.4	8.0	7.7

*ONS



8 B: Perinatal Deaths 2002-2009 - CORRECTED

Corrected = excluding major congenital anomalies, <22 weeks gestation and <500g birthweight

Numbers

	2002	2003	2004	2005	2006	2007	2008	2009
West Midlands	400	418	408	442	385	428	420	369
SATH Trust	29	37	27	26	29	29	27	26

Rate/1,000

	2002	2003	2004	2005	2006	2007	2008	2009	2009 CI
West Midlands	6.5	6.5	6.2	6.7	5.7	6.1	5.8	5.2	4.7 - 5.7
SATH Trust	6.1	7.3	5.4	5.3	5.7	5.6	5.1	4.9	3.4 - 7.2

3 year moving averages

	02-04	03-05	04-06	05-07	06-08	07-09
West Midlands	6.4	6.4	6.2	6.1	5.9	5.7
SATH Trust	6.3	6.0	5.5	5.5	5.5	5.2

