



Crystal Court, Aston Cross
Birmingham, B6 5RQ

Telephone 0121 687 3400
Facsimile 0121 687 3401
E-mail: office@pi.nhs.uk
Website: www.pi.nhs.uk

Director
Professor Jason Gardosi MD FRCOG FRCSED

Direct Dial: 0121 687 3500
E-mail: jason.gardosi@pi.nhs.uk

2 December 2010

**Perinatal & Infant Mortality - 2009 Unit Report:
HEART OF ENGLAND NHS FOUNDATION TRUST**

This report provides the latest update of stillbirth, perinatal and infant mortality rates for your Trust, as well as for the West Midlands and England & Wales. The report is delayed because of the late release by ONS of the 2009 births and deaths extracts which we cross check our cases with, and the Vital Statistics national reference data, which became available only in November this year.

The report includes

- yearly rates and three-year moving averages, summarised for stillbirths and infant deaths, as well as early neonatal, neonatal and perinatal death rates for comparison with other sources;
- 'corrected' mortality rates, after exclusion of congenital anomalies and pre-viable births;
- main categories / causes of stillbirths and infant deaths for your unit and the West Midlands

Additional information relevant to your PCT's maternity population has been presented in the respective Cluster reports which have been sent out earlier this year, and are available on www.pi.nhs.uk/pnm/clusterreports

As always, specific information relating to your unit is available on request (www.pi.nhs.uk/data). In addition, we are currently completing development of a web based interactive tool, and will be able to display mortality rates and trends on-line in the New Year.

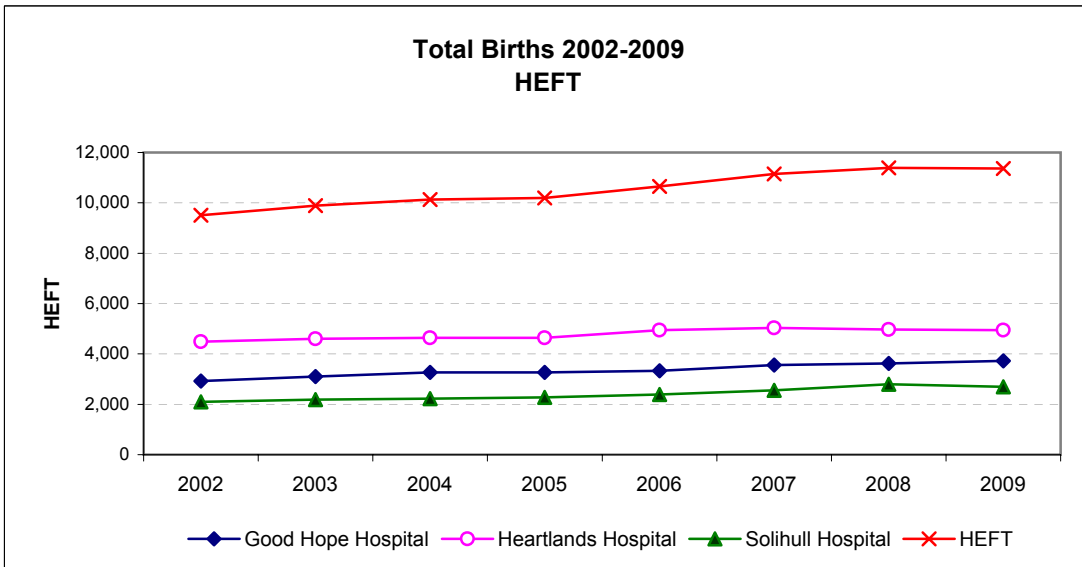
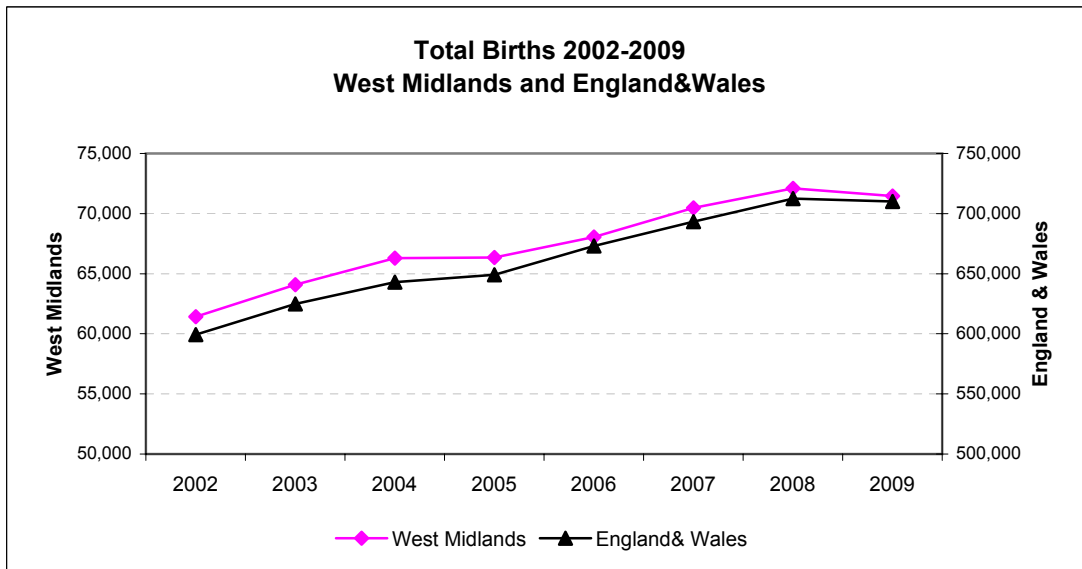
With sincere regards,

Professor Jason Gardosi
Director, Perinatal Institute

1. Births: Heart of England NHS Foundation Trust, WM and E&W 2002-2009

Source: ONS

	2002	2003	2004	2005	2006	2007	2008	2009
England& Wales	599,279	624,816	643,026	649,094	672,966	693,356	712,328	709,936
West Midlands	61,417	64,079	66,285	66,351	68,063	70,476	72,110	71,452
HEFT	9,509	9,887	10,131	10,191	10,657	11,154	11,386	11,365
Good Hope Hospital	2,921	3,104	3,271	3,271	3,328	3,565	3,618	3,721
Heartlands Hospital	4,486	4,602	4,640	4,641	4,945	5,039	4,969	4,944
Solihull Hospital	2,102	2,181	2,220	2,279	2,384	2,550	2,799	2,700



2 A: Stillbirths 2002-2009

Numbers

	2002	2003	2004	2005	2006	2007	2008	2009
England and Wales*	3365	3565	3517	3473	3590	3585	3617	3688
West Midlands	391	395	383	403	392	398	416	414
HEFT	68	86	72	67	74	74	74	73
Good Hope Hospital	11	18	15	12	14	14	18	19
Heartlands Hospital	48	55	52	49	57	54	48	49
Solihull Hospital	9	13	5	6	3	6	8	5

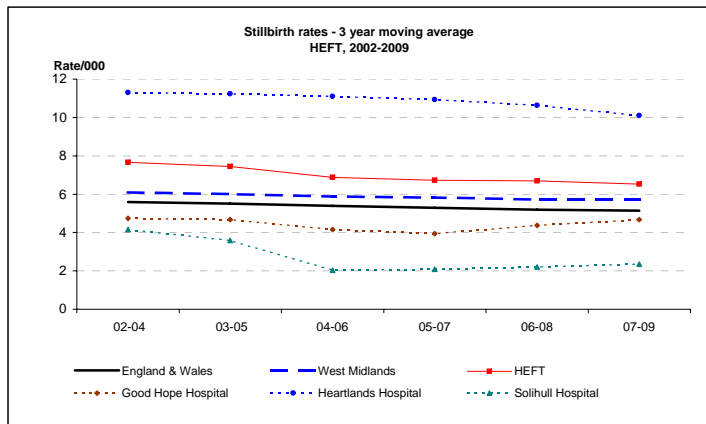
Rate/1,000

	2002	2003	2004	2005	2006	2007	2008	2009	2009 CI
England and Wales*	5.6	5.7	5.5	5.4	5.3	5.2	5.1	5.2	
West Midlands	6.4	6.2	5.8	6.1	5.8	5.6	5.8	5.8	5.3 - 6.4
HEFT	7.2	8.7	7.1	6.6	6.9	6.6	6.5	6.4	5.1 - 8.1
Good Hope Hospital	3.8	5.8	4.6	3.7	4.2	3.9	5.0	5.1	3.3 - 8.0
Heartlands Hospital	10.7	12.0	11.2	10.6	11.5	10.7	9.7	9.9	7.5 - 13.1
Solihull Hospital	4.3	6.0	2.3	2.6	1.3	2.4	2.9	1.9	0.8 - 4.3

3 year moving averages

	02-04	03-05	04-06	05-07	06-08	07-09
England & Wales	5.6	5.5	5.4	5.3	5.2	5.1
West Midlands	6.1	6.0	5.9	5.8	5.7	5.7
HEFT	7.7	7.4	6.9	6.7	6.7	6.5
Good Hope Hospital	4.7	4.7	4.2	3.9	4.4	4.7
Heartlands Hospital	11.3	11.2	11.1	10.9	10.6	10.1
Solihull Hospital	4.2	3.6	2.0	2.1	2.2	2.4

*ONS



2 B: Stillbirths 2002-2009 - CORRECTED

(Excluding major congenital anomalies)

Numbers

	2002	2003	2004	2005	2006	2007	2008	2009
West Midlands	282	284	279	311	268	284	290	259
HEFT	56	60	52	51	47	48	45	45
Good Hope Hospital	9	12	10	9	7	9	12	13
Heartlands Hospital	39	38	38	38	38	33	27	29
Solihull Hospital	8	10	4	4	2	6	6	3

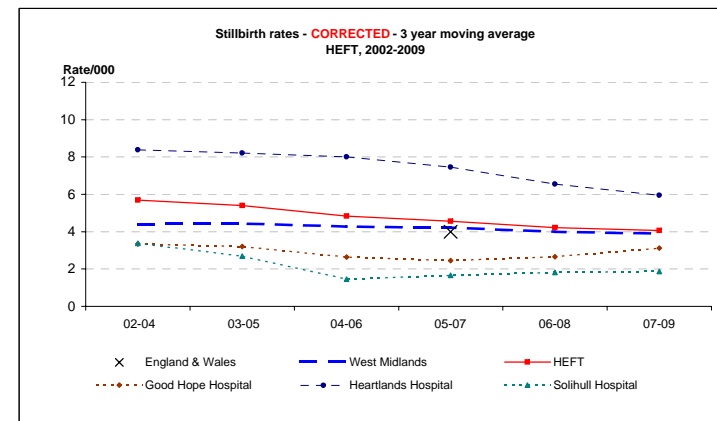
Rate/1,000

	2002	2003	2004	2005	2006	2007	2008	2009	2009 CI
England and Wales**	4.6	4.4	4.2	4.1	4.1	3.9	4.0	3.6	3.2 - 4.1
West Midlands	5.9	6.1	5.1	4.7	3.9	4.0	4.0	4.0	3.0 - 5.3
HEFT	3.1	3.9	3.1	2.8	2.1	2.5	3.3	3.5	2.0 - 6.0
Good Hope Hospital	8.7	8.3	8.2	8.2	7.7	6.5	5.4	5.9	4.1 - 8.4
Solihull Hospital	3.8	4.6	1.8	1.8	0.8	2.4	2.1	1.1	0.4 - 3.3

3 year moving averages

	02-04	03-05	04-06	05-07	06-08	07-09
England & Wales	4.4	4.4	4.3	4.0	4.0	3.9
West Midlands	5.7	5.4	4.8	4.6	4.2	4.1
HEFT	3.3	3.2	2.6	2.5	2.7	3.1
Good Hope Hospital	8.4	8.2	8.0	7.5	6.6	6.0
Solihull Hospital	3.4	2.7	1.5	1.7	1.8	1.9

**CEMACH



3. Stillbirths, 2002 -2009: Classification in main categories

Categories based on ReCoDe classification

	2002	2003	2004	2005	2006	2007	2008	2009
Births	9509	9887	10131	10191	10657	11154	11386	11365

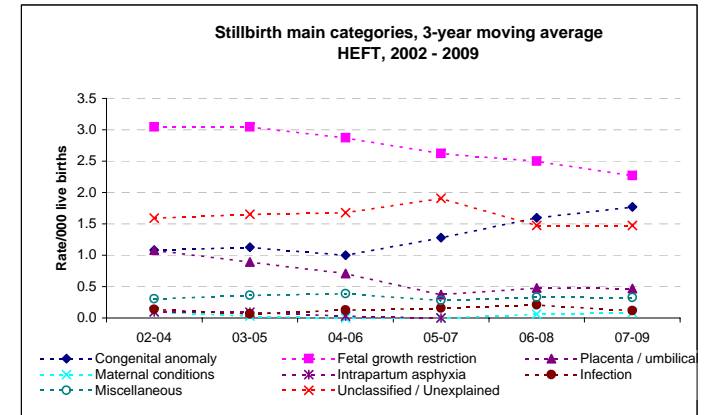
MAIN CATEGORIES

Numbers

Congenital anomaly	9	14	9	11	11	19	23	18
Fetal growth restriction	25	36	29	27	33	24	26	27
Placenta/Umbilical chord	8	12	12	3	7	2	7	7
Maternal conditions	2	1	0	0	0	0	2	1
Infection	2	1	1	0	3	2	2	0
Intrapartum asphyxia	3	6	0	2	1	0	0	0
Miscellaneous	1	3	5	3	4	2	5	4
Unclassified / Unexplained	18	13	16	21	15	25	9	16

3-year moving averages

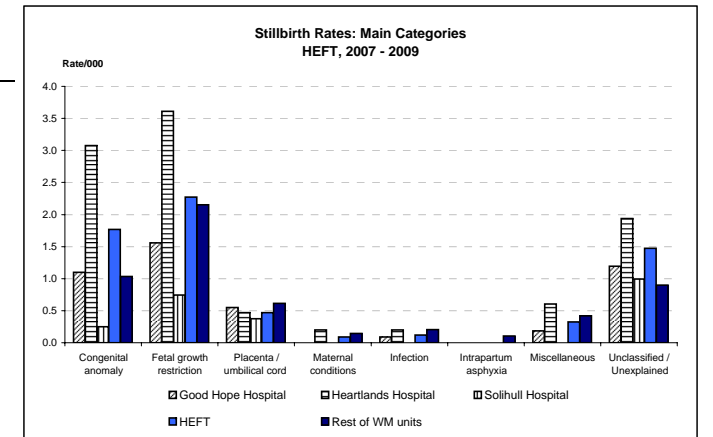
	02-04	03-05	04-06	05-07	06-08	07-09
Congenital anomaly	1.1	1.1	1.0	1.3	1.6	1.8
Fetal growth restriction	3.0	3.0	2.9	2.6	2.5	2.3
Placenta / umbilical cord	1.1	0.9	0.7	0.4	0.5	0.5
Maternal conditions	0.1	0.0	0.0	0.0	0.1	0.1
Infection	0.1	0.1	0.1	0.2	0.2	0.1
Intrapartum asphyxia	0.3	0.3	0.1	0.1	0.0	0.0
Miscellaneous	0.3	0.4	0.4	0.3	0.3	0.3
Unclassified / Unexplained	1.6	1.7	1.7	1.9	1.5	1.5



Births 2007-9	Good Hope Hospital 10,904	Heartlands Hospital 14,952	Solihull Hospital 8,049	HEFT 33,905	Rest of WM units 183,902
---------------	------------------------------	-------------------------------	----------------------------	----------------	-----------------------------

MAIN CATEGORIES - 2007-9

	No.	Rate	No.	Rate	No.	Rate	No.	Rate	No.	Rate
Congenital anomaly	12	1.1	46	3.1	2	0.2	60	1.8	190	1.0
Fetal growth restriction	17	1.6	54	3.6	6	0.7	77	2.3	396	2.2
Placenta / umbilical cord	6	0.6	7	0.5	3	0.4	16	0.5	113	0.6
Maternal conditions	0	0.0	3	0.2	0	0.0	3	0.1	27	0.1
Infection	1	0.1	3	0.2	0	0.0	4	0.1	38	0.2
Intrapartum asphyxia	0	0.0	0	0.0	0	0.0	0	0.0	19	0.1
Miscellaneous	2	0.2	9	0.6	0	0.0	11	0.3	77	0.4
Unclassified / Unexplained	13	1.2	29	1.9	8	1.0	50	1.5	165	0.9



4 A: Infant Deaths 2002-2009

Numbers

	2002	2003	2004	2005	2006	2007	2008	2009
England and Wales*	3144	3274	3234	3217	3329	3309	3369	3312
West Midlands	407	476	419	423	407	422	458	455
HEFT	67	96	68	66	76	75	77	74
Good Hope Hospital	21	25	16	14	21	16	19	14
Heartlands Hospital	41	67	46	47	53	55	58	58
Solihull Hospital	5	4	6	5	2	4	0	2

Rate/1,000

	2002	2003	2004	2005	2006	2007	2008	2009	2009 CI
England and Wales*	5.3	5.3	5.1	5.0	5.0	4.8	4.8	4.7	4.5 - 4.9
West Midlands	6.7	7.5	6.4	6.4	6.0	6.0	6.4	6.4	5.8 - 7.0
HEFT	7.1	9.8	6.8	6.5	7.2	6.8	6.8	6.6	5.2 - 8.2
Good Hope Hospital	7.2	8.1	4.9	4.3	6.3	4.5	5.3	3.8	2.3 - 6.3
Heartlands Hospital	9.2	14.7	10.0	10.2	10.8	11.0	11.8	11.8	9.2 - 15.3
Solihull Hospital	2.4	1.8	2.7	2.2	0.8	1.6	0.0	0.7	0.2 - 2.7

Infant death rates - 3 year moving average - PDN

	02-04	03-05	04-06	05-07	06-08	07-09
England & Wales	5.2	5.1	5.0	4.9	4.8	4.8
West Midlands	6.8	6.7	6.3	6.1	6.1	6.3
HEFT	7.9	7.7	6.8	6.8	6.9	6.7
Good Hope Hospital	6.7	5.7	5.2	5.0	5.4	4.5
Heartlands Hospital	11.3	11.7	10.4	10.7	11.2	11.6
Solihull Hospital	2.3	2.3	1.9	1.5	0.8	0.7

*ONS

4 B: Infant deaths 2002-2009 - CORRECTED

Corrected = excluding major congenital anomalies, <22 weeks gestation and <500g birthweight

Numbers

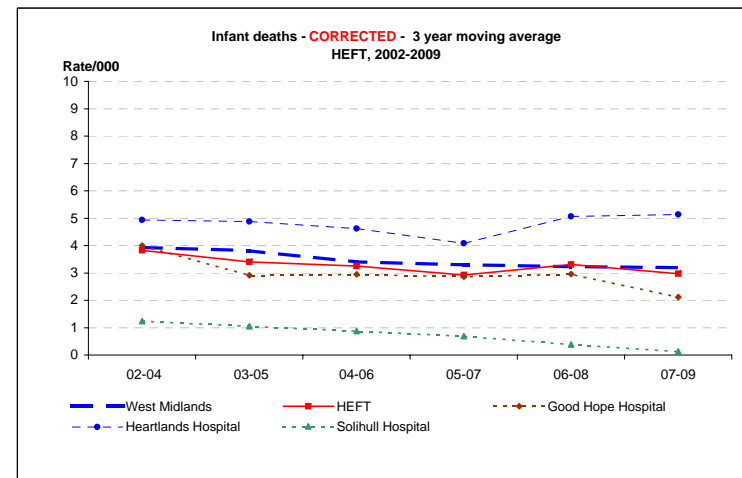
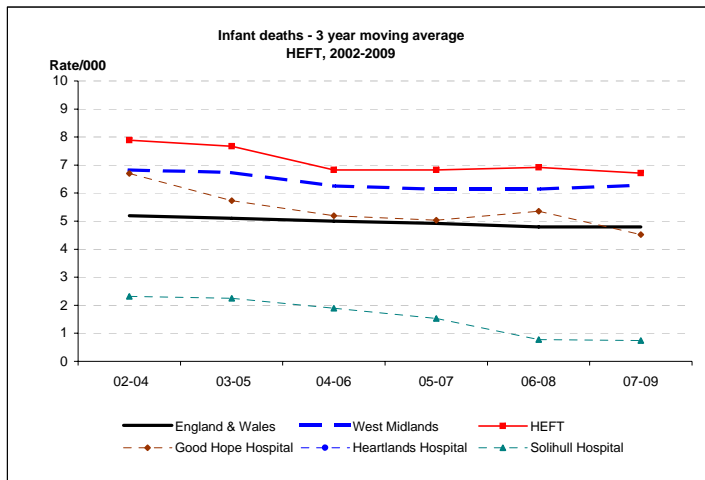
	2002	2003	2004	2005	2006	2007	2008	2009
West Midlands	238	274	236	235	208	228	240	211
HEFT	35	41	36	25	39	29	41	30
Good Hope Hospital	13	13	11	4	14	11	6	6
Heartlands Hospital	19	25	23	19	23	17	35	24
Solihull Hospital	3	3	2	2	2	1	0	0

Rate/1,000

	2002	2003	2004	2005	2006	2007	2008	2009	2009 CI
West Midlands	3.9	4.3	3.6	3.6	3.1	3.3	3.3	3.0	2.6 - 3.4
HEFT	3.7	4.2	3.6	2.5	3.7	2.6	3.6	2.7	1.9 - 3.8
Good Hope Hospital	4.5	4.2	3.4	1.2	4.2	3.1	1.7	1.6	0.7 - 3.5
Heartlands Hospital	4.3	5.5	5.0	4.1	4.7	3.4	7.1	4.9	3.3 - 7.3
Solihull Hospital	1.4	1.4	0.9	0.9	0.8	0.4	0.0	0.0	0.0 - 1.4

3 year moving averages

	02-04	03-05	04-06	05-07	06-08	07-09
West Midlands	3.9	3.8	3.4	3.3	3.2	3.2
HEFT	3.8	3.4	3.3	2.9	3.3	3.0
Good Hope Hospital	4.0	2.9	3.0	2.9	3.0	2.1
Heartlands Hospital	4.9	4.9	4.6	4.1	5.1	5.1
Solihull Hospital	1.2	1.1	0.9	0.7	0.4	0.1



5. Infant Deaths, 2002-2008: main categories

Categories based on Fetal/Neonatal/Infant classification

	2002	2003	2004	2005	2006	2007	2008	2009
Live Births	9441	9801	10059	10124	10583	11080	11312	11292

MAIN CATEGORIES

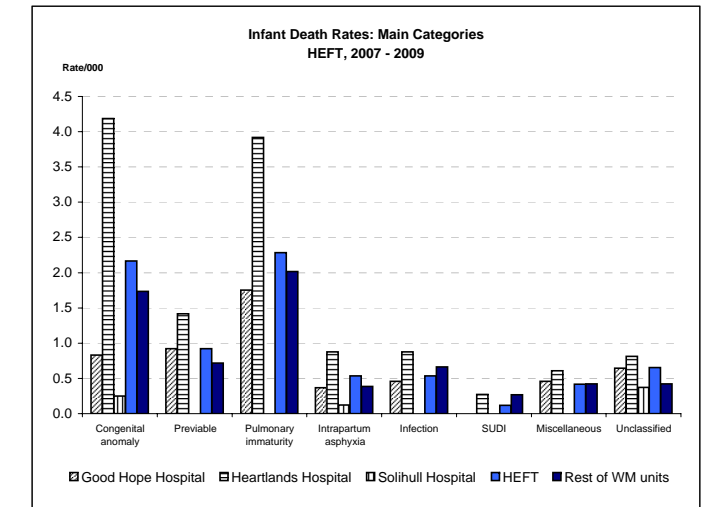
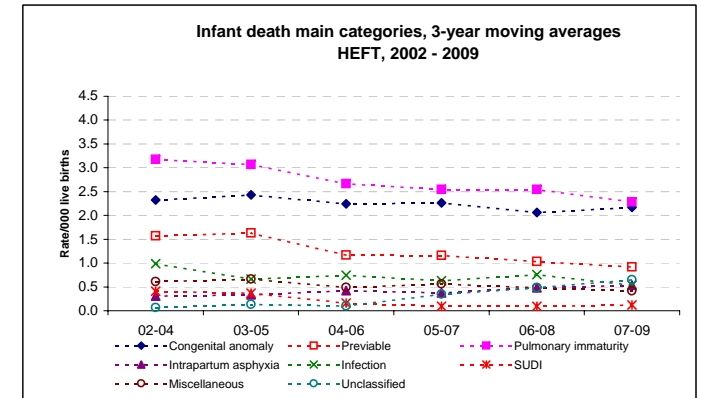
Numbers

Congenital anomaly	20	29	19	25	25	22	21	30
Previabie	10	23	13	13	10	14	10	7
Pulmonary immaturity	25	40	28	24	30	27	27	23
Intrapartum asphyxia	2	2	5	3	5	4	7	7
Infection	14	7	8	5	10	5	10	3
SUDI	2	7	3	1	1	1	1	2
Miscellaneous	4	9	5	6	4	8	4	2
Unclassified	0	2	0	2	1	8	7	7

3-year moving averages

	02-04	03-05	04-06	05-07	06-08	07-09
Congenital anomaly	2.3	2.4	2.2	2.3	2.1	2.2
Previabie	1.6	1.6	1.2	1.2	1.0	0.9
Pulmonary immaturity	3.2	3.1	2.7	2.5	2.5	2.3
Intrapartum asphyxia	0.3	0.3	0.4	0.4	0.5	0.5
Infection	1.0	0.7	0.7	0.6	0.8	0.5
SUDI	0.4	0.4	0.2	0.1	0.1	0.1
Miscellaneous	0.6	0.7	0.5	0.6	0.5	0.4
Unclassified	0.1	0.1	0.1	0.3	0.5	0.7

Live Births 2006-8	Good Hope Hospital 10,853		Heartlands Hospital 14,801		Solihull Hospital 8,030		HEFT 33,684		Rest of WM units 182,919	
	No.	Rate	No.	Rate	No.	Rate	No.	Rate	No.	Rate
Congenital anomaly	9	0.8	62	4.2	2	0.2	73	2.2	317	1.7
Previabie	10	0.9	21	1.4	0	0.0	31	0.9	131	0.7
Pulmonary immaturity	19	1.8	58	3.9	0	0.0	77	2.3	369	2.0
Intrapartum asphyxia	4	0.4	13	0.9	1	0.1	18	0.5	71	0.4
Infection	5	0.5	13	0.9	0	0.0	18	0.5	121	0.7
SUDI	0	0.0	4	0.3	0	0.0	4	0.1	49	0.3
Miscellaneous	5	0.5	9	0.6	0	0.0	14	0.4	77	0.4
Unclassified	7	0.6	12	0.8	3	0.4	22	0.7	77	0.4



6 A: Early Neonatal deaths 2002-2009

Early neonatal = birth to age 7 days

Numbers

	2002	2003	2004	2005	2006	2007	2008	2009
England and Wales*	1628	1726	1714	1681	1750	1762	1763	1715
West Midlands	234	266	255	270	245	268	258	246
HEFT	42	56	40	45	47	51	46	48
Good Hope Hospital	12	13	8	7	13	13	12	12
Heartlands Hospital	27	42	30	33	34	37	34	36
Solihull Hospital	3	1	2	5	0	1	0	0

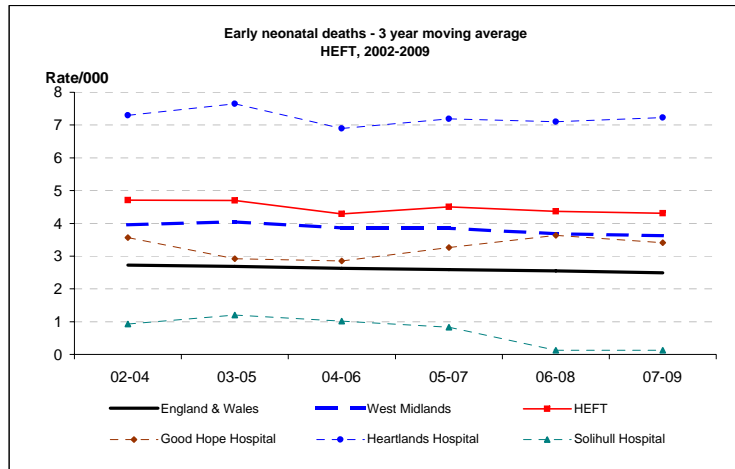
Rate/1,000

	2002	2003	2004	2005	2006	2007	2008	2009	2009 CI
England and Wales*	2.7	2.8	2.7	2.6	2.6	2.6	2.5	2.4	2.3 - 2.5
West Midlands	3.8	4.2	3.9	4.1	3.6	3.8	3.6	3.5	3.1 - 3.9
HEFT	4.4	5.7	4.0	4.4	4.4	4.6	4.1	4.3	3.2 - 5.6
Good Hope Hospital	4.1	4.2	2.5	2.1	3.9	3.7	3.3	3.2	1.9 - 5.7
Heartlands Hospital	6.1	9.2	6.5	7.2	7.0	7.4	6.9	7.4	5.3 - 10.2
Solihull Hospital	1.4	0.5	0.9	2.2	0.0	0.4	0.0	0.0	0.0 - 1.4

3 year moving averages

	02-04	03-05	04-06	05-07	06-08	07-09
England & Wales	2.7	2.7	2.6	2.6	2.6	2.5
West Midlands	4.0	4.0	3.9	3.8	3.7	3.6
HEFT	4.7	4.7	4.3	4.5	4.4	4.3
Good Hope Hospital	3.6	2.9	2.8	3.3	3.6	3.4
Heartlands Hospital	7.3	7.6	6.9	7.2	7.1	7.2
Solihull Hospital	0.9	1.2	1.0	0.8	0.1	0.1

*ONS



6 B: Early Neonatal Deaths 2002-2009 - CORRECTED

Corrected = excluding major congenital anomalies, <22 weeks gestation and <500g birthweight

Numbers

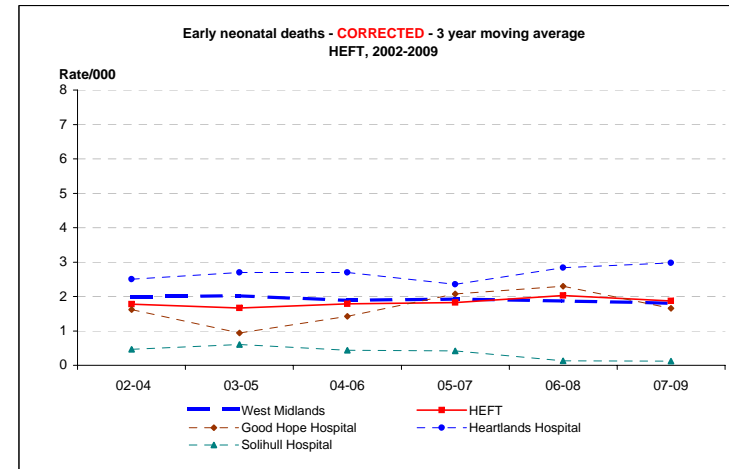
	2002	2003	2004	2005	2006	2007	2008	2009
West Midlands	118	134	129	131	117	144	130	110
HEFT	19	17	16	17	22	19	26	18
Good Hope Hospital	7	5	3	1	10	10	4	4
Heartlands Hospital	11	11	12	14	12	8	22	14
Solihull Hospital	1	1	1	2	0	1	0	0

Rate/1,000

	2002	2003	2004	2005	2006	2007	2008	2009	2009 CI
West Midlands	1.9	2.1	2.0	2.0	1.7	2.1	1.8	1.5	1.3 - 1.9
HEFT	2.0	1.7	1.6	1.7	2.1	1.7	2.3	1.6	1.0 - 2.5
Good Hope Hospital	2.4	1.6	0.9	0.3	3.0	2.8	1.1	1.1	0.4 - 2.8
Heartlands Hospital	2.5	2.4	2.6	3.0	2.5	1.6	4.5	2.9	1.7 - 4.8
Solihull Hospital	0.5	0.5	0.5	0.9	0.0	0.4	0.0	0.0	0.0 - 1.4

3 year moving averages

	02-04	03-05	04-06	05-07	06-08	07-09
West Midlands	2.0	2.0	1.9	1.9	1.9	1.8
HEFT	1.8	1.7	1.8	1.8	2.0	1.9
Good Hope Hospital	1.6	0.9	1.4	2.1	2.3	1.7
Heartlands Hospital	2.5	2.7	2.7	2.4	2.8	3.0
Solihull Hospital	0.5	0.6	0.4	0.4	0.1	0.1



7 A: Neonatal deaths 2002-2009

Neonatal = birth to age 28 days

Numbers

	2002	2003	2004	2005	2006	2007	2008	2009
England and Wales*	2129	2234	2223	2205	2331	2269	2299	2251
West Midlands	294	329	314	327	316	316	321	321
HEFT	56	67	53	51	60	57	55	60
Good Hope Hospital	16	17	11	9	17	13	14	14
Heartlands Hospital	35	48	39	37	42	43	41	46
Solihull Hospital	5	2	3	5	1	1	0	0

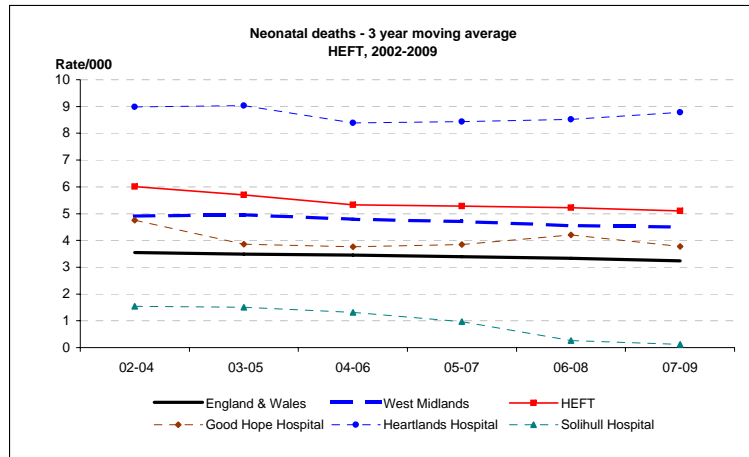
Rate/1,000

	2002	2003	2004	2005	2006	2007	2008	2009	2009 CI
England and Wales*	3.6	3.6	3.5	3.4	3.5	3.3	3.2	3.2	3.1 - 3.3
West Midlands	4.8	5.2	4.8	5.0	4.7	4.5	4.5	4.5	4.1 - 5.0
HEFT	5.9	6.8	5.3	5.0	5.7	5.1	4.9	5.3	4.1 - 6.8
Good Hope Hospital	5.5	5.5	3.4	2.8	5.1	3.7	3.9	3.8	2.3 - 6.3
Heartlands Hospital	7.9	10.6	8.5	8.1	8.6	8.6	8.3	9.4	7.1 - 12.5
Solihull Hospital	2.4	0.9	1.4	2.2	0.4	0.4	0.0	0.0	0.0 - 1.4

3 year moving averages

	02-04	03-05	04-06	05-07	06-08	07-09
England & Wales	3.5	3.5	3.5	3.4	3.3	3.2
West Midlands	4.9	5.0	4.8	4.7	4.6	4.5
HEFT	6.0	5.7	5.3	5.3	5.2	5.1
Good Hope Hospital	4.8	3.9	3.8	3.9	4.2	3.8
Heartlands Hospital	9.0	9.0	8.4	8.4	8.5	8.8
Solihull Hospital	1.5	1.5	1.3	1.0	0.3	0.1

*ONS



7 B: Neonatal Deaths 2002-2009 - CORRECTED

Corrected = excluding major congenital anomalies, <22 weeks gestation and <500g birthweight

Numbers

	2002	2003	2004	2005	2006	2007	2008	2009
West Midlands	157	176	166	172	168	172	168	149
HEFT	26	22	25	20	31	23	31	28
Good Hope Hospital	10	7	6	2	11	10	5	6
Heartlands Hospital	13	13	18	16	19	12	26	22
Solihull Hospital	3	2	1	2	1	1	0	0

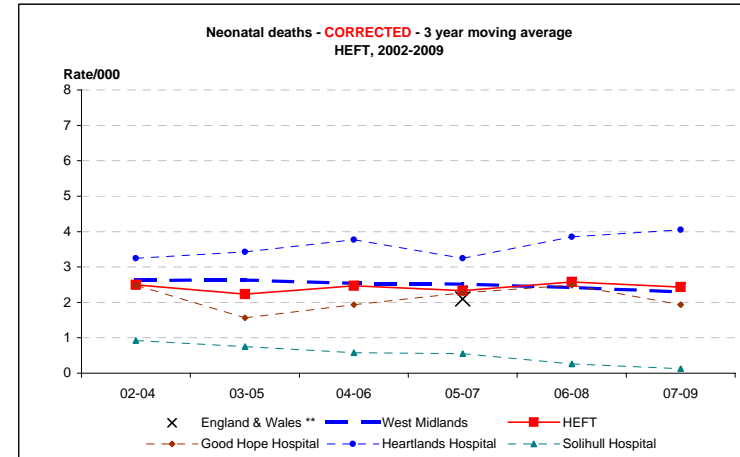
Rate/1,000

	2002	2003	2004	2005	2006	2007	2008	2009	2009 CI
England and Wales**				2.1	2.3	2.0			
West Midlands	2.6	2.8	2.5	2.6	2.5	2.5	2.3	2.1	1.8 - 2.5
HEFT	2.8	2.2	2.5	2.0	2.9	2.1	2.7	2.5	1.7 - 3.6
Good Hope Hospital	3.4	2.3	1.8	0.6	3.3	2.8	1.4	1.6	0.7 - 3.5
Heartlands Hospital	2.9	2.9	3.9	3.5	3.9	2.4	5.3	4.5	3.0 - 6.8
Solihull Hospital	1.4	0.9	0.5	0.9	0.4	0.4	0.0	0.0	0.0 - 1.4

3 year moving averages

	02-04	03-05	04-06	05-07	06-08	07-09
England & Wales **				2.1		
West Midlands	2.6	2.6	2.5	2.5	2.4	2.3
HEFT	2.5	2.2	2.5	2.3	2.6	2.4
Good Hope Hospital	2.5	1.6	1.9	2.3	2.5	1.9
Heartlands Hospital	3.2	3.4	3.8	3.2	3.9	4.1
Solihull Hospital	0.9	0.8	0.6	0.6	0.3	0.1

**CEMACH



x = England & Wales 3 y adjusted average from CEMACH

8 A: Perinatal Deaths 2002-2009

Perinatal = stillbirths and early neonatal deaths

Numbers

	2002	2003	2004	2005	2006	2007	2008	2009
England and Wales*	4993	5291	5231	5154	5340	5347	5380	5403
West Midlands	625	661	638	673	637	666	674	656
HEFT	110	142	112	112	121	125	120	121
Good Hope Hospital	23	31	23	19	27	27	30	30
Heartlands Hospital	75	97	82	82	91	91	82	86
Solihull Hospital	12	14	7	11	3	7	8	5

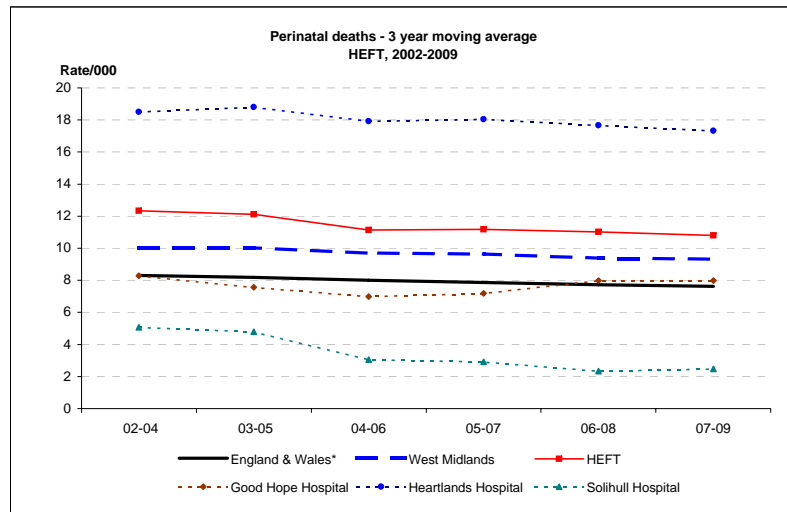
Rate/1,000

	2002	2003	2004	2005	2006	2007	2008	2009	2009 CI
England and Wales*	8.3	8.5	8.1	7.9	7.9	7.7	7.6	7.6	
West Midlands	10.2	10.3	9.6	10.1	9.4	9.5	9.3	9.2	8.5 - 9.9
HEFT	11.6	14.4	11.1	11.0	11.4	11.2	10.5	10.6	8.9 - 12.7
Good Hope Hospital	7.9	10.0	7.0	5.8	8.1	7.6	8.3	8.1	5.7 - 11.5
Heartlands Hospital	16.7	21.1	17.7	17.7	18.4	18.1	16.5	17.4	14.1 - 21.4
Solihull Hospital	5.7	6.4	3.2	4.8	1.3	2.7	2.9	1.9	0.8 - 4.3

3 year moving averages

	02-04	03-05	04-06	05-07	06-08	07-09
England & Wales*	8.3	8.2	8.0	7.9	7.7	7.6
West Midlands	10.0	10.0	9.7	9.6	9.4	9.3
HEFT	12.3	12.1	11.1	11.2	11.0	10.8
Good Hope Hospital	8.3	7.6	7.0	7.2	8.0	8.0
Heartlands Hospital	18.5	18.8	17.9	18.1	17.7	17.3
Solihull Hospital	5.1	4.8	3.1	2.9	2.3	2.5

*ONS



8 B: Perinatal Deaths 2002-2009 - CORRECTED

Corrected = excluding major congenital anomalies, <22 weeks gestation and <500g birthweight

Numbers

	2002	2003	2004	2005	2006	2007	2008	2009
West Midlands	400	418	408	442	385	428	420	369
HEFT	75	77	68	68	69	67	71	63
Good Hope Hospital	16	17	13	10	17	19	16	17
Heartlands Hospital	50	49	50	52	50	41	49	43
Solihull Hospital	9	11	5	6	2	7	6	3

Rate/1,000

	2002	2003	2004	2005	2006	2007	2008	2009	2009 CI
West Midlands	6.5	6.5	6.2	6.7	5.7	6.1	5.8	5.2	4.7 - 5.7
HEFT	7.9	7.8	6.7	6.7	6.5	6.0	6.2	5.5	4.3 - 7.1
Good Hope Hospital	5.5	5.5	4.0	3.1	5.1	5.3	4.4	4.6	2.9 - 7.3
Heartlands Hospital	11.1	10.6	10.8	11.2	10.1	8.1	9.9	8.7	6.5 - 11.7
Solihull Hospital	4.3	5.0	2.3	2.6	0.8	2.7	2.1	1.1	0.4 - 3.3

3 year moving averages

	02-04	03-05	04-06	05-07	06-08	07-09
West Midlands	6.4	6.4	6.2	6.1	5.9	5.7
HEFT	7.5	7.1	6.6	6.4	6.2	5.9
Good Hope Hospital	4.9	4.1	4.1	4.5	4.9	4.8
Heartlands Hospital	10.9	10.9	10.7	9.8	9.4	8.9
Solihull Hospital	3.8	3.3	1.9	2.1	1.9	2.0

