



Crystal Court, Aston Cross
Birmingham, B6 5RQ

Telephone: 0121 687 3400
Facsimile: 0121 687 3401
E-mail: office@pi.nhs.uk
Website: www.pi.nhs.uk

Director

Professor Jason O Gardosi MD FRCOG FRCSed

Direct Line: 0121 687 3500
E-mail: gardosi@pi.nhs.uk

22 July 2010

Dear Colleague

PERINATAL & INFANT MORTALITY SURVEY 2008/9 – WEST MERCIA

This report relates to the newly formed **West Mercia Cluster and its constituent PCTs**. It provides an update of mortality rates to 2009 for stillbirths and neonatal deaths, and to 2008 for infant deaths. PCT cohorts are defined here according to postcode.

Method

The regional information is based on the WM Perinatal Death Notifications (PDNs) which the Perinatal Institute receives from its network of co-ordinators in West Midlands units. The information may sometimes differ from the last ONS Vital Statistics, because our data includes late ascertained cases which are notified to the PI on an ongoing basis. We have also implemented cross checks with the WM Safeguarding Children's Boards.

This report includes

- birth rate trend in West Mercia, West Midlands (WM) and England & Wales (E&W);
- a short description of West Mercia demographics based on PEER 09/10;
- numbers, rates and 3year moving averages for
 - stillbirths (from 24 weeks)
 - early neonatal deaths (birth to age 7 days)
 - perinatal deaths (stillbirths and early neonatal deaths)
 - neonatal deaths (birth to age 28 days)
 - infant deaths (birth to 12 months)

Although these categories overlap, the data are presented for ease of reference and comparison with other reports. Unlike previous national reports, we continue presenting trends by 3 year moving averages, as year-on-year variation may often falsely identify outliers.

As in previous years, we also present 'corrected' rates, whereby we exclude congenital anomalies and pre-viable births, to allow more useful comparisons between PCTs with different populations.

For stillbirths and infant deaths, we have undertaken the following additional analyses:

1. mortality rates plotted against deprivation index of the birth population: this allows each PCT's mortality rate to be seen within the context of the level of deprivation within its population;
2. analysis of stillbirths and infant deaths within major classification groups, to assess the main contributing causes.

Findings

1. Births

- a. As the graph shows, birth trends in West Mercia and West Midlands follow the national trend. After an increase in recent years, they appear to have reached a plateau in W Mercia since 2007.
- b. In the table, several comparative maternity demographics are presented. Compared with the rest of the region, mothers in West Mercia have less social deprivation and tend to be older; fewer mothers are from ethnic minorities overall, although there is a higher proportion from Eastern Europe. Smoking rates at booking are higher and cessation rates during pregnancy are lower. While prematurity is higher, fewer babies are born with IUGR than in the rest of the region.

2. Stillbirth trends

West Mercia stillbirth rates are similar to the national average and lower than in the WM. There are differences between the PCTs but confidence intervals are wide because of small numbers and random variation. The differences are reduced for corrected rates (excluding congenital anomalies).

3. **Stillbirths and Deprivation:** This analysis, for crude and corrected figures, shows that PCT stillbirth rates, adjusted for each PCT's respective IMD score, are within the expected range.
4. **Stillbirth classification groups:** trends are presented for the main groups but analysis is limited because of small numbers. Deaths associated with intrauterine growth restriction (IUGR) represent the largest category, and are highest in Telford & Wrekin. However, compared to the rest of the West Midlands, rates are lower in each of the main categories.

5. Infant deaths – trends

West Mercia infant death rates are below those of E&W and well below those in the WM, although once again the differences are not statistically significant because of small numbers and wide confidence intervals. For corrected rates (after exclusion of congenital anomalies and previsible births), the differences to WM rates are smaller but still apparent (E&W rates are not available).

6. **Infant deaths and deprivation:** as for stillbirths, this analysis shows that the infant mortality rates for each of the PCT's, after adjustment for their respective IMD scores, are within the prediction lines.
7. **Infant death classification groups** – as elsewhere, the largest categories are pulmonary immaturity and congenital anomalies. The rates in West Mercia are lower than the rest of the West Midlands in each of the main categories – including congenital anomalies, previsible deaths and prematurity.

Sections 8 & 9 show rates for subgroups of infant deaths (**early neonatal and neonatal**), and in section 10, rates for **perinatal deaths** are presented, with similar comparisons for crude and corrected rates.

Further analyses are currently being undertaken and will be reported in the coming weeks, including a more thorough analysis of subgroups of the WM maternity population.

Comments and suggestions for our reports are always welcome, and specific analyses continue to be available on request (www.pi.nhs.uk/data).

With sincere regards



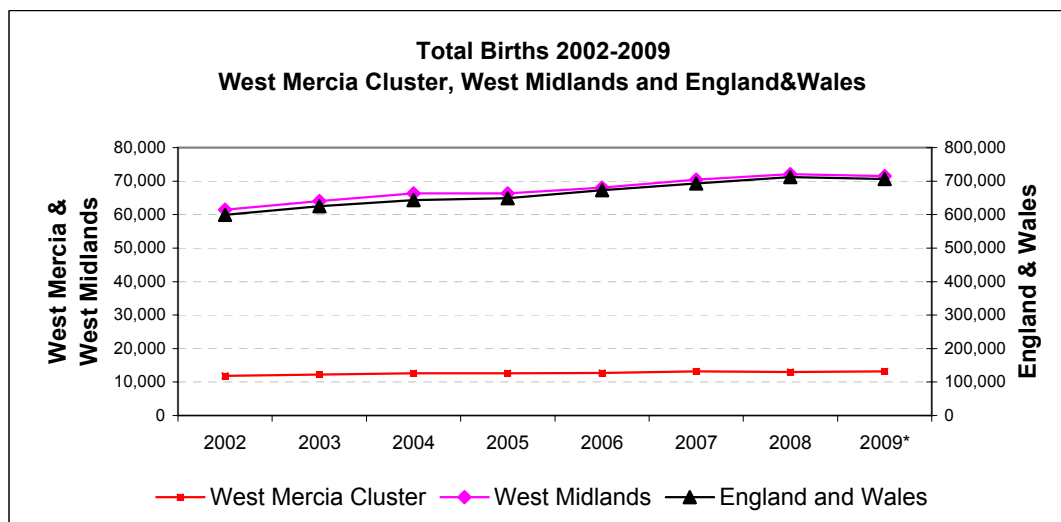
Professor Jason Gardosi
Director, West Midlands Perinatal Institute

1. Births: West Mercia, West Midlands and England & Wales 2002-2009

Source: ONS

| | 2002 | 2003 | 2004 | 2005 | 2006 | 2007 | 2008 | 2009* |
|---------------------|---------|---------|---------|---------|---------|---------|---------|---------|
| England and Wales | 599,279 | 624,816 | 643,026 | 649,094 | 672,966 | 693,356 | 712,328 | 706,248 |
| West Midlands | 61,417 | 64,079 | 66,285 | 66,351 | 68,063 | 70,476 | 72,110 | 71,452 |
| West Mercia Cluster | 11,824 | 12,246 | 12,580 | 12,582 | 12,715 | 13,204 | 13,023 | 13,157 |
| Herefordshire | 1,576 | 1,673 | 1,697 | 1,664 | 1,720 | 1,827 | 1,754 | 1,830 |
| Shropshire | 2,749 | 2,852 | 2,759 | 2,774 | 2,793 | 2,878 | 2,913 | 2,954 |
| Telford&Wrekin | 1,935 | 1,923 | 2,118 | 2,067 | 2,145 | 2,245 | 2,177 | 2,266 |
| Worcestershire | 5,564 | 5,798 | 6,006 | 6,077 | 6,057 | 6,254 | 6,179 | 6,107 |

* Provisional, live births only



Data: PEER 2009/10

| | West Mercia | Rest of West Midlands | West Midlands Total | | West Mercia | Rest of West Midlands | West Midlands Total |
|-----------------------------------|-------------|-----------------------|---------------------|------------------------|-------------|-----------------------|---------------------|
| Submissions: | 6,025 | 42,474 | 48,499 | Submissions: | 6,025 | 42,474 | 48,499 |
| Deprivation - IMD Quintile | | | | Maternal Age | | | |
| 1 (least) | 15.0% | 7.0% | 8.0% | < 16 | 0.2% | 0.2% | 0.2% |
| 2 | 21.0% | 10.2% | 11.5% | < 18 | 1.8% | 2.0% | 2.0% |
| 3 | 30.6% | 13.8% | 15.9% | < 20 | 6.4% | 7.5% | 7.4% |
| 4 | 20.2% | 20.4% | 20.4% | 20 - 24 | 20.2% | 23.4% | 23.0% |
| 5 (most) | 13.2% | 48.6% | 44.2% | 25 - 29 | 26.6% | 29.6% | 29.2% |
| Ethnic Origin | | | | 30 - 34 | 26.9% | 23.9% | 24.3% |
| African | 0.6% | 3.9% | 3.5% | 35 - 39 | 16.3% | 12.7% | 13.1% |
| African Caribbean | 0.2% | 2.6% | 2.3% | 35+ | 20.0% | 15.6% | 16.1% |
| British European | 87.2% | 64.1% | 67.0% | 40+ | 3.6% | 2.9% | 3.0% |
| Eastern European | 4.9% | 2.6% | 2.9% | Body Mass Index | | | |
| Middle Eastern | 0.2% | 1.4% | 1.3% | < 18.5 | 2.9% | 3.4% | 3.3% |
| South Asian | 3.6% | 19.6% | 17.6% | 18.5 - 24.9 | 50.4% | 47.7% | 48.0% |
| Bangladeshi | 0.3% | 2.4% | 2.1% | 25 - 29.9 | 27.3% | 28.3% | 28.2% |
| Indian | 1.3% | 5.6% | 5.0% | 30 - 34.9 | 12.0% | 13.0% | 12.8% |
| Pakistani | 2.0% | 11.6% | 10.4% | 35 - 39.9 | 5.1% | 5.2% | 5.2% |
| Other/Mixed | 3.4% | 5.8% | 5.5% | 30+ | 19.4% | 20.6% | 20.4% |
| Smoking | | | | 35+ | 7.4% | 7.6% | 7.6% |
| At booking | 20.2% | 19.2% | 19.3% | 40+ | 2.3% | 2.4% | 2.4% |
| Late in pregnancy | 15.9% | 13.7% | 14.0% | Prematurity | | | |
| Ceased During Pregnancy | 19.7% | 26.8% | 25.9% | < 37 Weeks | 7.2% | 6.7% | 6.7% |
| IUGR (<10th cust.cent.) | 13.1% | 14.4% | 14.2% | < 34 Weeks | 2.3% | 2.1% | 2.1% |

2 A: Stillbirths 2002-2009

West Midlands

Numbers

| | 2002 | 2003 | 2004 | 2005 | 2006 | 2007 | 2008 | 2009 |
|---------------------|------|------|------|------|------|------|------|------|
| England and Wales* | 3365 | 3565 | 3517 | 3473 | 3590 | 3585 | 3617 | |
| West Midlands | 391 | 395 | 383 | 403 | 392 | 398 | 416 | 414 |
| West Mercia Cluster | 67 | 59 | 64 | 68 | 64 | 74 | 65 | 59 |
| Herefordshire | 11 | 5 | 5 | 7 | 12 | 12 | 3 | 6 |
| Shropshire | 8 | 17 | 12 | 7 | 12 | 15 | 18 | 12 |
| Telford&Wrekin | 16 | 10 | 20 | 12 | 11 | 16 | 14 | 13 |
| Worcestershire | 32 | 27 | 27 | 42 | 29 | 31 | 30 | 28 |

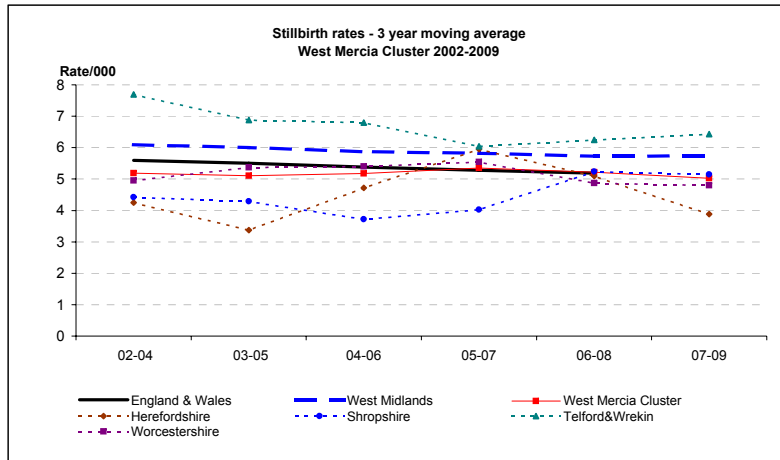
Rate/1,000

| | 2002 | 2003 | 2004 | 2005 | 2006 | 2007 | 2008 | 2009 | 2009 CI |
|---------------------|------|------|------|------|------|------|------|------|-----------|
| England and Wales* | 5.6 | 5.7 | 5.5 | 5.4 | 5.3 | 5.2 | 5.1 | | |
| West Midlands | 6.4 | 6.2 | 5.8 | 6.1 | 5.8 | 5.6 | 5.8 | 5.8 | 5.3 - 6.4 |
| West Mercia Cluster | 5.7 | 4.8 | 5.1 | 5.4 | 5.0 | 5.6 | 5.0 | 4.5 | 3.5 - 5.8 |
| Herefordshire | 7.0 | 3.0 | 2.9 | 4.2 | 7.0 | 6.6 | 1.7 | 3.3 | 1.5 - 7.1 |
| Shropshire | 2.9 | 6.0 | 4.3 | 2.5 | 4.3 | 5.2 | 6.2 | 4.1 | 2.3 - 7.1 |
| Telford&Wrekin | 8.3 | 5.2 | 9.4 | 5.8 | 5.1 | 7.1 | 6.4 | 5.7 | 3.4 - 9.8 |
| Worcestershire | 5.8 | 4.7 | 4.5 | 6.9 | 4.8 | 5.0 | 4.9 | 4.6 | 3.2 - 6.6 |

3 year moving averages

| | 02-04 | 03-05 | 04-06 | 05-07 | 06-08 | 07-09 |
|---------------------|-------|-------|-------|-------|-------|-------|
| England & Wales | 5.6 | 5.5 | 5.4 | 5.3 | 5.2 | |
| West Midlands | 6.1 | 6.0 | 5.9 | 5.8 | 5.7 | 5.7 |
| West Mercia Cluster | 5.2 | 5.1 | 5.2 | 5.4 | 5.2 | 5.0 |
| Herefordshire | 4.2 | 3.4 | 4.7 | 5.9 | 5.1 | 3.9 |
| Shropshire | 4.4 | 4.3 | 3.7 | 4.0 | 5.2 | 5.1 |
| Telford&Wrekin | 7.7 | 6.9 | 6.8 | 6.0 | 6.2 | 6.4 |
| Worcestershire | 5.0 | 5.4 | 5.4 | 5.5 | 4.9 | 4.8 |

*ONS



2 B: Stillbirths 2002-2009 - CORRECTED

(Excluding major congenital anomalies)

Numbers

| | 2002 | 2003 | 2004 | 2005 | 2006 | 2007 | 2008 | 2009 |
|---------------------|------|------|------|------|------|------|------|------|
| West Midlands | 282 | 284 | 279 | 311 | 268 | 284 | 290 | 259 |
| West Mercia Cluster | 50 | 38 | 54 | 53 | 46 | 57 | 40 | 38 |
| Herefordshire | 10 | 2 | 5 | 5 | 8 | 10 | 3 | 3 |
| Shropshire | 6 | 12 | 11 | 7 | 8 | 12 | 11 | 8 |
| Telford&Wrekin | 12 | 6 | 14 | 10 | 7 | 12 | 8 | 8 |
| Worcestershire | 22 | 18 | 24 | 31 | 23 | 23 | 18 | 19 |

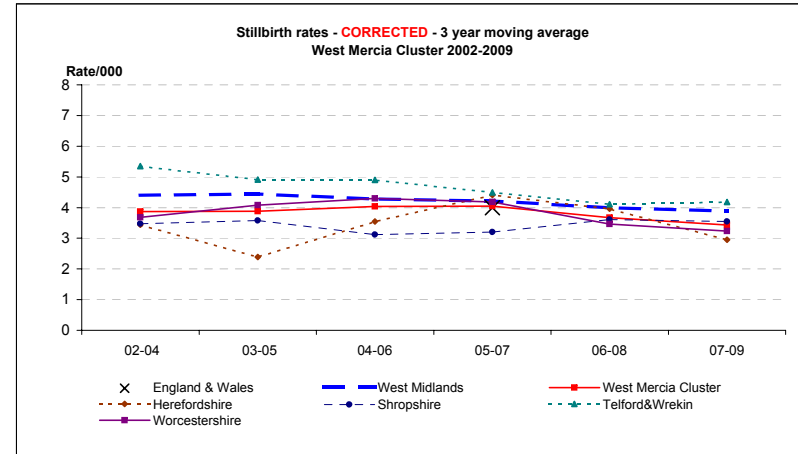
Rate/1,000

| | 2002 | 2003 | 2004 | 2005 | 2006 | 2007 | 2008 | 2009 | 2009 CI |
|---------------------|------|------|------|------|------|------|------|------|-----------|
| England and Wales** | 4.6 | 4.4 | 4.2 | 4.1 | 4.1 | 3.9 | 4.0 | 3.6 | 3.2 - 4.1 |
| West Midlands | 4.2 | 3.1 | 4.3 | 4.2 | 3.6 | 4.3 | 3.1 | 2.9 | 2.1 - 4.0 |
| West Mercia Cluster | 4.2 | 3.1 | 4.3 | 4.2 | 3.6 | 4.3 | 3.1 | 2.9 | 2.1 - 4.0 |
| Herefordshire | 6.3 | 1.2 | 2.9 | 3.0 | 4.7 | 5.5 | 1.7 | 1.6 | 0.6 - 4.8 |
| Shropshire | 2.2 | 4.2 | 4.0 | 2.5 | 2.9 | 4.2 | 3.8 | 2.7 | 1.4 - 5.3 |
| Telford&Wrekin | 6.2 | 3.1 | 6.6 | 4.8 | 3.3 | 5.3 | 3.7 | 3.5 | 1.8 - 7.0 |
| Worcestershire | 4.0 | 3.1 | 4.0 | 5.1 | 3.8 | 3.7 | 2.9 | 3.1 | 2.0 - 4.9 |

3 year moving averages

| | 02-04 | 03-05 | 04-06 | 05-07 | 06-08 | 07-09 |
|---------------------|-------|-------|-------|-------|-------|-------|
| England & Wales | 4.6 | 4.4 | 4.2 | 4.1 | 4.1 | 3.9 |
| West Midlands | 4.4 | 4.4 | 4.3 | 4.2 | 4.0 | 3.9 |
| West Mercia Cluster | 3.9 | 3.9 | 4.0 | 4.1 | 3.7 | 3.4 |
| Herefordshire | 3.4 | 2.4 | 3.5 | 4.4 | 4.0 | 3.0 |
| Shropshire | 3.5 | 3.6 | 3.1 | 3.2 | 3.6 | 3.5 |
| Telford&Wrekin | 5.4 | 4.9 | 4.9 | 4.5 | 4.1 | 4.2 |
| Worcestershire | 3.7 | 4.1 | 4.3 | 4.2 | 3.5 | 3.2 |

**CEMACH



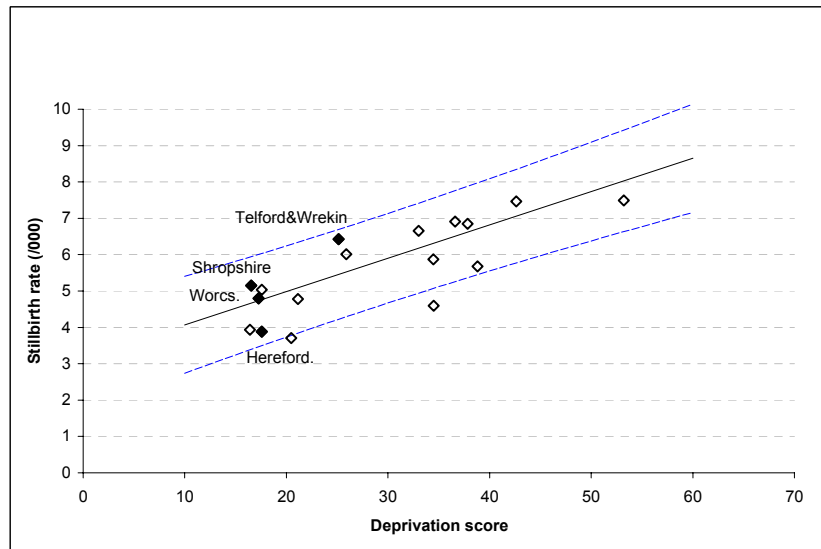
x = England & Wales 3 y adjusted average from CEMACH

3. Stillbirths and Deprivation, West Mercia PCTs

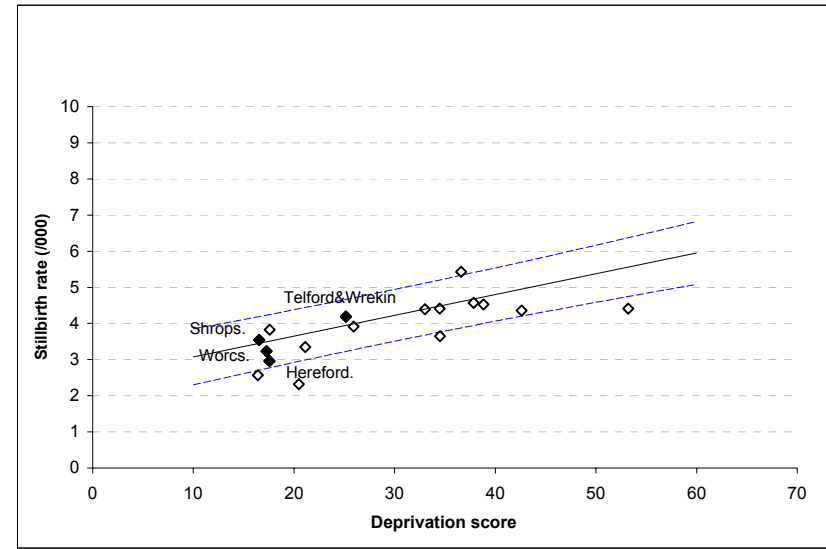
Graphs show stillbirth rates for the last triennium (2007-9) for West Mercia PCTs, plotted against each PCT's respective deprivation score (IMD 2007).

Regression line with 90% prediction intervals (based on 2002-2009 data) are also shown

A. Crude rates



B. Corrected rates - after excluding major congenital anomalies



4. Stillbirths in the West Mercia, 2002 -2009: Classification in main groups

Groups based on ReCoDe classification

| | 2002 | 2003 | 2004 | 2005 | 2006 | 2007 | 2008 | 2009 |
|--------|-------|-------|-------|-------|-------|-------|-------|-------|
| Births | 11824 | 12246 | 12580 | 12582 | 12715 | 13204 | 13023 | 13157 |

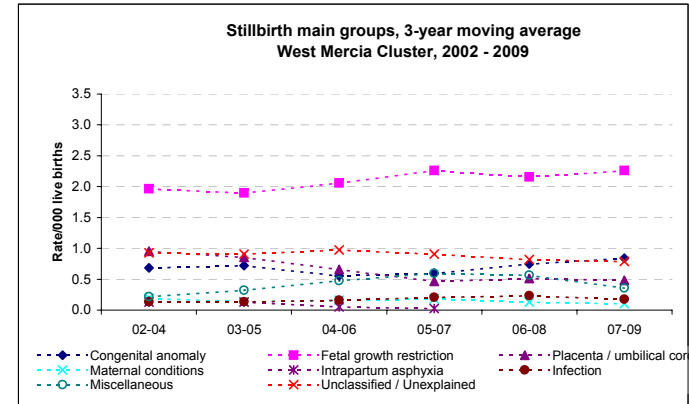
MAIN GROUPS

Numbers

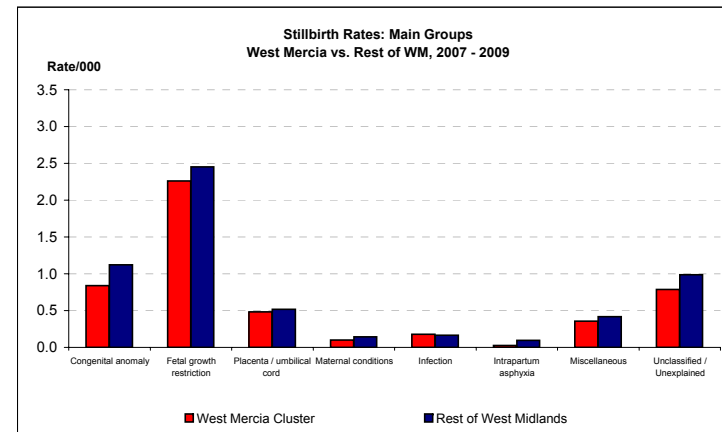
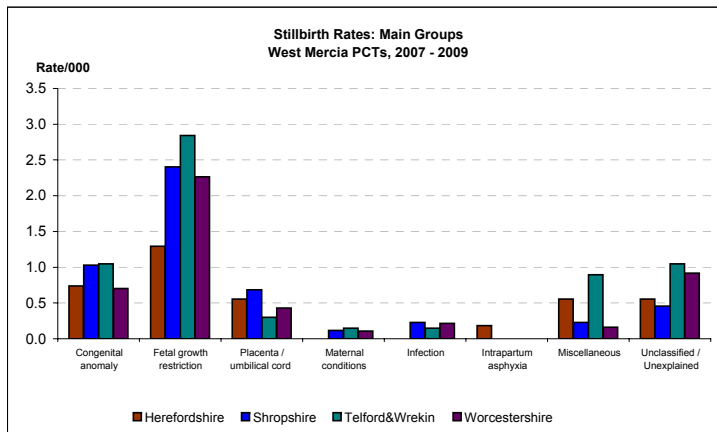
| | | | | | | | | |
|----------------------------|----|----|----|----|----|----|----|----|
| Congenital anomaly | 7 | 14 | 4 | 9 | 8 | 6 | 15 | 12 |
| Fetal growth restriction | 28 | 20 | 24 | 27 | 27 | 33 | 24 | 32 |
| Placenta/Umbilical chord | 10 | 12 | 13 | 7 | 5 | 6 | 9 | 4 |
| Maternal conditions | 4 | 1 | 2 | 2 | 2 | 3 | 0 | 1 |
| Infection | 2 | 1 | 2 | 2 | 2 | 4 | 3 | 0 |
| Intrapartum asphyxia | 2 | 1 | 1 | 3 | 1 | 1 | 0 | 0 |
| Miscellaneous | 3 | 3 | 2 | 7 | 9 | 7 | 6 | 1 |
| Unclassified / Unexplained | 11 | 7 | 16 | 11 | 10 | 14 | 8 | 9 |

3-year moving averages

| | 02-04 | 03-05 | 04-06 | 05-07 | 06-08 | 07-09 |
|----------------------------|-------|-------|-------|-------|-------|-------|
| Congenital anomaly | 0.7 | 0.7 | 0.6 | 0.6 | 0.7 | 0.8 |
| Fetal growth restriction | 2.0 | 1.9 | 2.1 | 2.3 | 2.2 | 2.3 |
| Placenta / umbilical cord | 1.0 | 0.9 | 0.7 | 0.5 | 0.5 | 0.5 |
| Maternal conditions | 0.2 | 0.1 | 0.2 | 0.2 | 0.1 | 0.1 |
| Infection | 0.1 | 0.1 | 0.2 | 0.2 | 0.2 | 0.2 |
| Intrapartum asphyxia | 0.1 | 0.1 | 0.1 | 0.1 | 0.1 | 0.0 |
| Miscellaneous | 0.2 | 0.3 | 0.5 | 0.6 | 0.6 | 0.4 |
| Unclassified / Unexplained | 0.9 | 0.9 | 1.0 | 0.9 | 0.8 | 0.8 |



| Births 2007-9 | Herefordshire 5,411 | | Shropshire 8,745 | | Telford&Wrekin 6,688 | | Worcestershire 18,540 | | West Mercia Cluster 39,384 | | Rest of West Midlands 174,654 | |
|-----------------------------|------------------------|------|---------------------|------|-------------------------|------|--------------------------|------|-------------------------------|------|----------------------------------|------|
| | No. | Rate | No. | Rate | No. | Rate | No. | Rate | No. | Rate | No. | Rate |
| MAIN GROUPS - 2007-9 | | | | | | | | | | | | |
| Congenital anomaly | 4 | 0.7 | 9 | 1.0 | 7 | 1.0 | 13 | 0.7 | 33 | 0.8 | 196 | 1.1 |
| Fetal growth restriction | 7 | 1.3 | 21 | 2.4 | 19 | 2.8 | 42 | 2.3 | 89 | 2.3 | 428 | 2.5 |
| Placenta / umbilical cord | 3 | 0.6 | 6 | 0.7 | 2 | 0.3 | 8 | 0.4 | 19 | 0.5 | 90 | 0.5 |
| Maternal conditions | 0 | 0.0 | 1 | 0.1 | 1 | 0.1 | 2 | 0.1 | 4 | 0.1 | 25 | 0.1 |
| Infection | 0 | 0.0 | 2 | 0.2 | 1 | 0.1 | 4 | 0.2 | 7 | 0.2 | 29 | 0.2 |
| Intrapartum asphyxia | 1 | 0.2 | 0 | 0.0 | 0 | 0.0 | 0 | 0.0 | 1 | 0.0 | 17 | 0.1 |
| Miscellaneous | 3 | 0.6 | 2 | 0.2 | 6 | 0.9 | 3 | 0.2 | 14 | 0.4 | 73 | 0.4 |
| Unclassified / Unexplained | 3 | 0.6 | 4 | 0.5 | 7 | 1.0 | 17 | 0.9 | 31 | 0.8 | 172 | 1.0 |



5 A: Infant Deaths 2002-2008

Numbers

| | 2002 | 2003 | 2004 | 2005 | 2006 | 2007 | 2008 |
|---------------------|------|------|------|------|------|------|------|
| England and Wales* | 3144 | 3274 | 3234 | 3217 | 3329 | 3309 | 3369 |
| West Midlands | 407 | 476 | 419 | 423 | 407 | 421 | 456 |
| West Mercia Cluster | 58 | 62 | 61 | 67 | 54 | 53 | 60 |
| Herefordshire | 7 | 5 | 8 | 13 | 7 | 3 | 10 |
| Shropshire | 15 | 18 | 7 | 11 | 15 | 12 | 16 |
| Telford&Wrekin | 10 | 7 | 12 | 11 | 8 | 6 | 17 |
| Worcestershire | 26 | 32 | 34 | 32 | 24 | 32 | 17 |

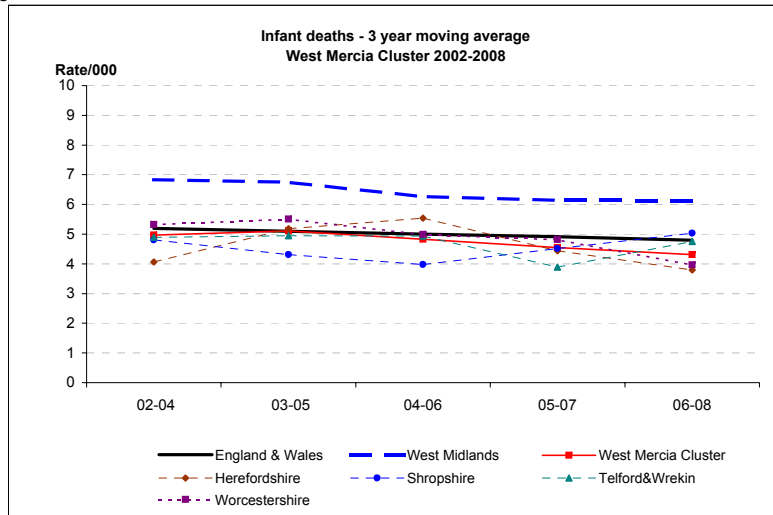
Rate/1,000

| | 2002 | 2003 | 2004 | 2005 | 2006 | 2007 | 2008 | 2008 CI |
|---------------------|------|------|------|------|------|------|------|------------|
| England and Wales* | 5.3 | 5.3 | 5.1 | 5.0 | 5.0 | 4.8 | 4.8 | 4.6 - 4.9 |
| West Midlands | 6.7 | 7.5 | 6.4 | 6.4 | 6.0 | 6.0 | 6.4 | 5.8 - 7.0 |
| West Mercia Cluster | 4.9 | 5.1 | 4.9 | 5.4 | 4.3 | 4.0 | 4.6 | 3.6 - 6.0 |
| Herefordshire | 4.5 | 3.0 | 4.7 | 7.8 | 4.1 | 1.7 | 5.7 | 3.1 - 10.5 |
| Shropshire | 5.5 | 6.3 | 2.5 | 4.0 | 5.4 | 4.2 | 5.5 | 3.4 - 9.0 |
| Telford&Wrekin | 5.2 | 3.7 | 5.7 | 5.4 | 3.7 | 2.7 | 7.9 | 4.9 - 12.6 |
| Worcestershire | 4.7 | 5.5 | 5.7 | 5.3 | 4.0 | 5.1 | 2.8 | 1.7 - 4.4 |

Infant death rates - 3 year moving average - PDN

| | 02-04 | 03-05 | 04-06 | 05-07 | 06-08 |
|---------------------|-------|-------|-------|-------|-------|
| England & Wales | 5.2 | 5.1 | 5.0 | 4.9 | 4.8 |
| West Midlands | 6.8 | 6.7 | 6.3 | 6.1 | 6.1 |
| West Mercia Cluster | 5.0 | 5.1 | 4.8 | 4.5 | 4.3 |
| Herefordshire | 4.1 | 5.2 | 5.5 | 4.4 | 3.8 |
| Shropshire | 4.8 | 4.3 | 4.0 | 4.5 | 5.0 |
| Telford&Wrekin | 4.9 | 4.9 | 4.9 | 3.9 | 4.8 |
| Worcestershire | 5.3 | 5.5 | 5.0 | 4.8 | 4.0 |

*ONS



5 B: Infant deaths 2002-2008 - CORRECTED

Corrected = excluding major congenital anomalies, <22 weeks gestation and <500g birthweight

Numbers

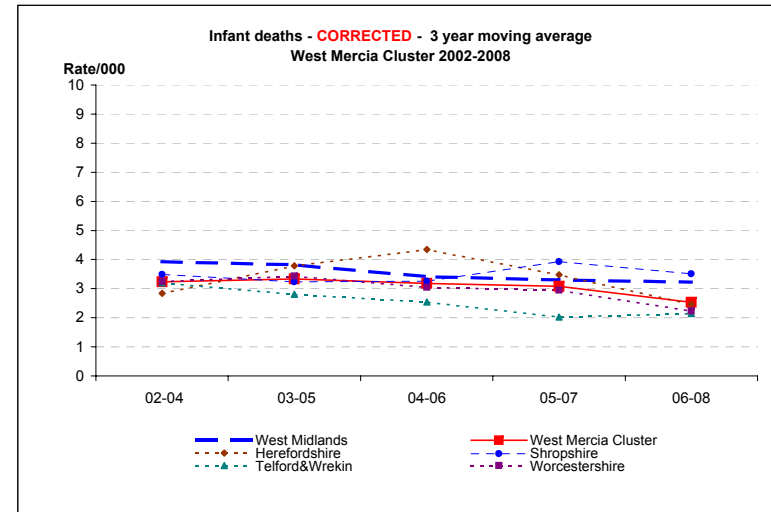
| | 2002 | 2003 | 2004 | 2005 | 2006 | 2007 | 2008 |
|---------------------|------|------|------|------|------|------|------|
| West Midlands | 238 | 275 | 236 | 235 | 209 | 228 | 239 |
| West Mercia Cluster | 44 | 38 | 36 | 50 | 34 | 34 | 30 |
| Herefordshire | 5 | 3 | 6 | 10 | 6 | 2 | 5 |
| Shropshire | 12 | 13 | 4 | 10 | 13 | 10 | 7 |
| Telford&Wrekin | 9 | 5 | 5 | 7 | 4 | 2 | 8 |
| Worcestershire | 18 | 17 | 21 | 23 | 11 | 20 | 10 |

Rate/1,000

| | 2002 | 2003 | 2004 | 2005 | 2006 | 2007 | 2008 | 2008 CI |
|---------------------|------|------|------|------|------|------|------|-----------|
| West Midlands | 3.9 | 4.3 | 3.6 | 3.6 | 3.1 | 3.3 | 3.3 | 2.9 - 3.8 |
| West Mercia Cluster | 3.7 | 3.1 | 2.9 | 4.0 | 2.7 | 2.6 | 2.3 | 1.6 - 3.3 |
| Herefordshire | 3.2 | 1.8 | 3.5 | 6.0 | 3.5 | 1.1 | 2.9 | 1.2 - 6.7 |
| Shropshire | 4.4 | 4.6 | 1.5 | 3.6 | 4.7 | 3.5 | 2.4 | 1.2 - 5.0 |
| Telford&Wrekin | 4.7 | 2.6 | 2.4 | 3.4 | 1.9 | 0.9 | 3.7 | 1.9 - 7.3 |
| Worcestershire | 3.3 | 2.9 | 3.5 | 3.8 | 1.8 | 3.2 | 1.6 | 0.9 - 3.0 |

3 year moving averages

| | 02-04 | 03-05 | 04-06 | 05-07 | 06-08 |
|---------------------|-------|-------|-------|-------|-------|
| West Midlands | 3.9 | 3.8 | 3.4 | 3.3 | 3.2 |
| West Mercia Cluster | 3.2 | 3.3 | 3.2 | 3.1 | 2.5 |
| Herefordshire | 2.8 | 3.8 | 4.4 | 3.5 | 2.5 |
| Shropshire | 3.5 | 3.2 | 3.3 | 3.9 | 3.5 |
| Telford&Wrekin | 3.2 | 2.8 | 2.5 | 2.0 | 2.1 |
| Worcestershire | 3.2 | 3.4 | 3.0 | 3.0 | 2.2 |

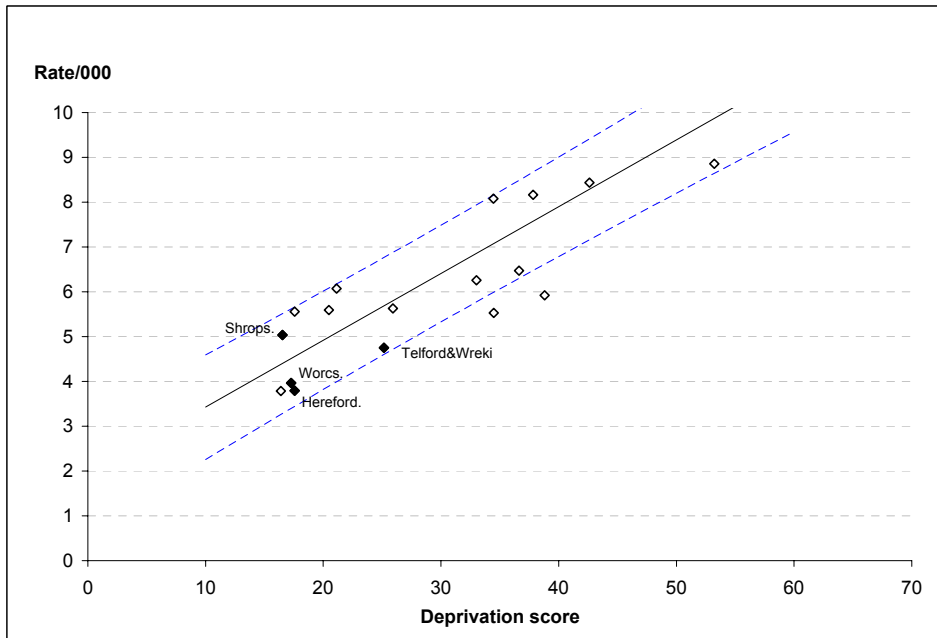


6. Infant deaths and Deprivation, West Mercia PCTs

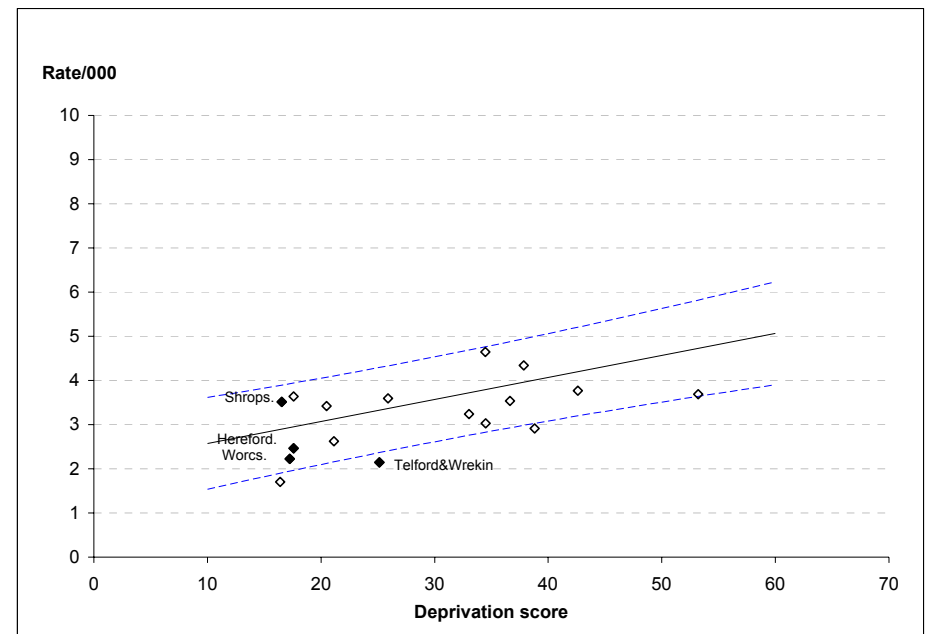
Graphs show infant deaths for the last available triennium (2006-8) for West Mercia PCTs, plotted against each PCT's respective deprivation score (IMD 2007).

Regression line with 90% prediction intervals (based on 2002-2008 data) are also shown

a. Crude rates



B. Corrected rates (after excluding major congenital anomalies and neonatal deaths <22 weeks and/or <500g)



7. Infant Deaths in West Mercia, 2002-2008: main groups

Groups based on Fetal/Neonatal/Infant classification

| | 2002 | 2003 | 2004 | 2005 | 2006 | 2007 | 2008 |
|-------------|-------|-------|-------|-------|-------|-------|-------|
| Live Births | 11757 | 12187 | 12516 | 12514 | 12651 | 13130 | 12958 |

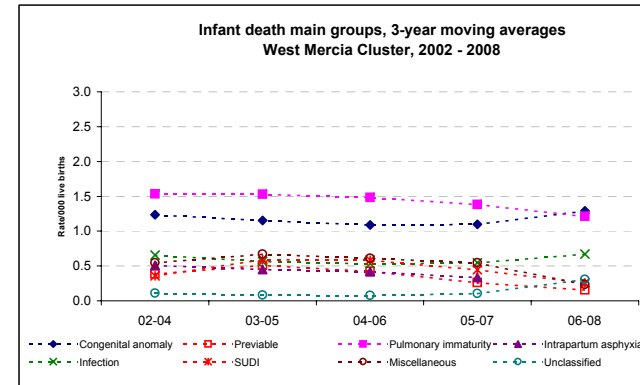
MAIN GROUPS

Numbers

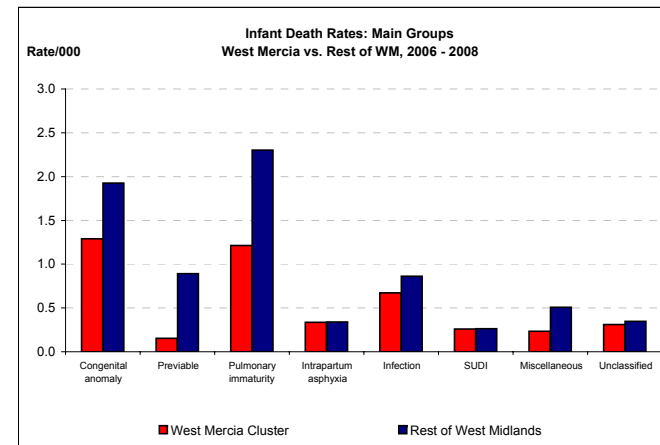
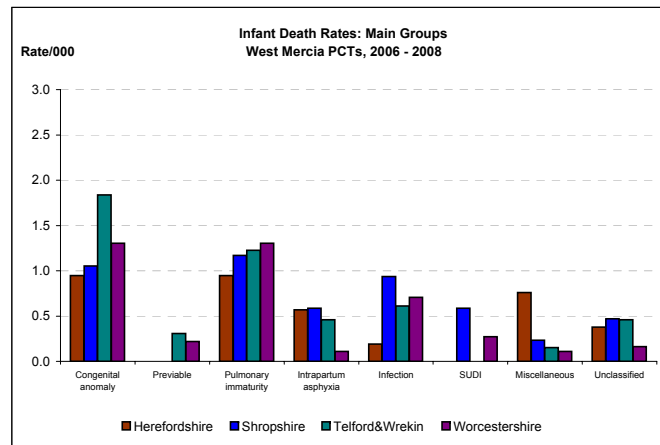
| | | | | | | | |
|----------------------|----|----|----|----|----|----|----|
| Congenital anomaly | 13 | 17 | 15 | 11 | 15 | 16 | 19 |
| Previabile | 1 | 5 | 8 | 6 | 2 | 2 | 2 |
| Pulmonary immaturity | 17 | 16 | 23 | 18 | 15 | 20 | 12 |
| Intrapartum asphyxia | 5 | 9 | 5 | 5 | 7 | 4 | 2 |
| Infection | 10 | 10 | 4 | 7 | 9 | 5 | 12 |
| SUDI | 2 | 3 | 8 | 11 | 3 | 3 | 4 |
| Miscellaneous | 10 | 5 | 5 | 15 | 3 | 3 | 3 |
| Unclassified | 1 | 2 | 1 | | 2 | 2 | 8 |

3-year moving averages

| | 02-04 | 03-05 | 04-06 | 05-07 | 06-08 |
|----------------------|-------|-------|-------|-------|-------|
| Congenital anomaly | 1.2 | 1.2 | 1.1 | 1.1 | 1.3 |
| Previabile | 0.4 | 0.5 | 0.4 | 0.3 | 0.2 |
| Pulmonary immaturity | 1.5 | 1.5 | 1.5 | 1.4 | 1.2 |
| Intrapartum asphyxia | 0.5 | 0.5 | 0.5 | 0.4 | 0.3 |
| Infection | 0.7 | 0.6 | 0.5 | 0.5 | 0.7 |
| SUDI | 0.4 | 0.6 | 0.6 | 0.4 | 0.3 |
| Miscellaneous | 0.5 | 0.7 | 0.6 | 0.5 | 0.2 |
| Unclassified | 0.1 | 0.1 | 0.1 | 0.1 | 0.3 |



| | Herefordshire | | Shropshire | | Telford&Wrekin | | Worcestershire | | West Mercia Cluster | | Rest of West Midlands | |
|----------------------|---------------|------|------------|------|----------------|------|----------------|------|---------------------|------|-----------------------|------|
| Live Births 2006-8 | 5274 | | 8539 | | 6526 | | 18400 | | 38739 | | 170704 | |
| MAIN GROUPS - 2006-8 | No. | Rate | No. | Rate | No. | Rate | No. | Rate | No. | Rate | No. | Rate |
| Congenital anomaly | 5 | 0.9 | 9 | 1.1 | 12 | 1.8 | 24 | 1.3 | 50 | 1.3 | 329 | 1.9 |
| Previabile | 0 | 0.0 | 0 | 0.0 | 2 | 0.3 | 4 | 0.2 | 6 | 0.2 | 152 | 0.9 |
| Pulmonary immaturity | 5 | 0.9 | 10 | 1.2 | 8 | 1.2 | 24 | 1.3 | 47 | 1.2 | 393 | 2.3 |
| Intrapartum asphyxia | 3 | 0.6 | 5 | 0.6 | 3 | 0.5 | 2 | 0.1 | 13 | 0.3 | 58 | 0.3 |
| Infection | 1 | 0.2 | 8 | 0.9 | 4 | 0.6 | 13 | 0.7 | 26 | 0.7 | 147 | 0.9 |
| SUDI | 0 | 0.0 | 5 | 0.6 | 0 | 0.0 | 5 | 0.3 | 10 | 0.3 | 45 | 0.3 |
| Miscellaneous | 4 | 0.8 | 2 | 0.2 | 1 | 0.2 | 2 | 0.1 | 9 | 0.2 | 87 | 0.5 |
| Unclassified | 2 | 0.4 | 4 | 0.5 | 3 | 0.5 | 3 | 0.2 | 12 | 0.3 | 59 | 0.3 |



8 A: Early Neonatal deaths 2002-2009

Early neonatal = birth to age 7 days

Numbers

| | 2002 | 2003 | 2004 | 2005 | 2006 | 2007 | 2008 | 2009 |
|---------------------|------|------|------|------|------|------|------|------|
| England and Wales* | 1628 | 1726 | 1714 | 1681 | 1750 | 1762 | 1763 | |
| West Midlands | 234 | 266 | 255 | 270 | 245 | 268 | 258 | 246 |
| West Mercia Cluster | 33 | 35 | 38 | 34 | 28 | 28 | 28 | 30 |
| Herefordshire | 3 | 1 | 3 | 7 | 5 | 2 | 5 | 1 |
| Shropshire | 9 | 9 | 3 | 5 | 8 | 5 | 7 | 8 |
| Telford&Wrekin | 4 | 5 | 8 | 2 | 6 | 1 | 11 | 5 |
| Worcestershire | 17 | 20 | 24 | 20 | 9 | 20 | 5 | 16 |

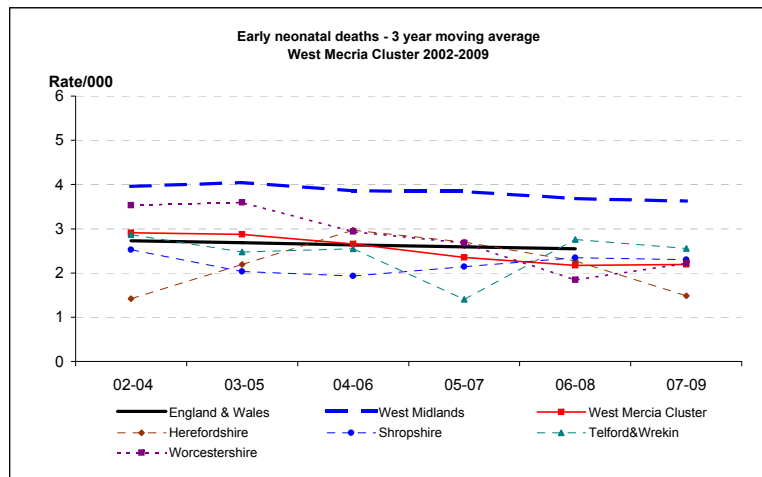
Rate/1,000

| | 2002 | 2003 | 2004 | 2005 | 2006 | 2007 | 2008 | 2009 | 2009 CI |
|---------------------|------|------|------|------|------|------|------|------|-----------|
| England and Wales* | 2.7 | 2.8 | 2.7 | 2.6 | 2.6 | 2.6 | 2.5 | | |
| West Midlands | 3.8 | 4.2 | 3.9 | 4.1 | 3.6 | 3.8 | 3.6 | 3.5 | 3.1 - 3.9 |
| West Mercia Cluster | 2.8 | 2.9 | 3.0 | 2.7 | 2.2 | 2.1 | 2.2 | 2.3 | 1.6 - 3.3 |
| Herefordshire | 1.9 | 0.6 | 1.8 | 4.2 | 2.9 | 1.1 | 2.9 | 0.5 | 0.1 - 3.1 |
| Shropshire | 3.3 | 3.2 | 1.1 | 1.8 | 2.9 | 1.7 | 2.4 | 2.7 | 1.4 - 5.4 |
| Telford&Wrekin | 2.1 | 2.6 | 3.8 | 1.0 | 2.8 | 0.4 | 5.1 | 2.2 | 0.9 - 5.2 |
| Worcestershire | 3.1 | 3.5 | 4.0 | 3.3 | 1.5 | 3.2 | 0.8 | 2.6 | 1.6 - 4.3 |

3 year moving averages

| | 02-04 | 03-05 | 04-06 | 05-07 | 06-08 | 07-09 |
|---------------------|-------|-------|-------|-------|-------|-------|
| England & Wales | 2.7 | 2.7 | 2.6 | 2.6 | 2.6 | |
| West Midlands | 4.0 | 4.0 | 3.9 | 3.8 | 3.7 | 3.6 |
| West Mercia Cluster | 2.9 | 2.9 | 2.7 | 2.4 | 2.2 | 2.2 |
| Herefordshire | 1.4 | 2.2 | 3.0 | 2.7 | 2.3 | 1.5 |
| Shropshire | 2.5 | 2.0 | 1.9 | 2.1 | 2.3 | 2.3 |
| Telford&Wrekin | 2.9 | 2.5 | 2.5 | 1.4 | 2.8 | 2.6 |
| Worcestershire | 3.5 | 3.6 | 2.9 | 2.7 | 1.8 | 2.2 |

*ONS



8 B: Early Neonatal Deaths 2002-2009 - CORRECTED

Corrected = excluding major congenital anomalies, <22 weeks gestation and <500g birthweight

Numbers

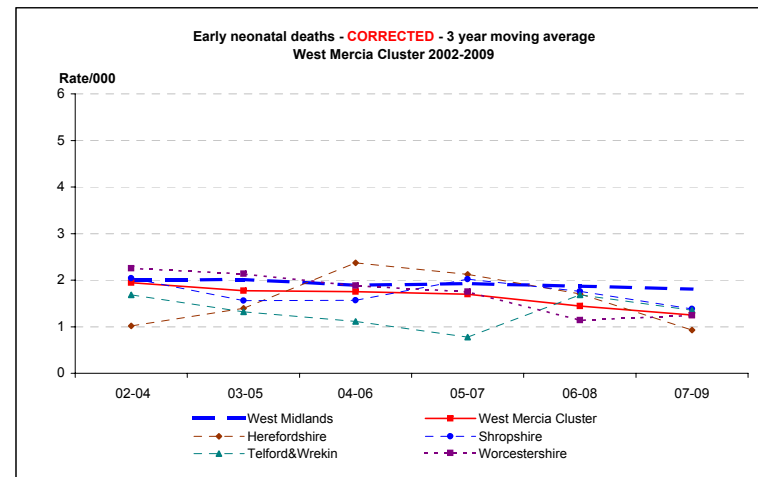
| | 2002 | 2003 | 2004 | 2005 | 2006 | 2007 | 2008 | 2009 |
|---------------------|------|------|------|------|------|------|------|------|
| West Midlands | 118 | 134 | 129 | 131 | 117 | 144 | 130 | 110 |
| West Mercia Cluster | 28 | 22 | 21 | 23 | 22 | 20 | 14 | 15 |
| Herefordshire | 3 | | 2 | 5 | 5 | 1 | 3 | 1 |
| Shropshire | 9 | 7 | 1 | 5 | 7 | 5 | 3 | 4 |
| Telford&Wrekin | 3 | 4 | 3 | 1 | 3 | 1 | 7 | 1 |
| Worcestershire | 13 | 11 | 15 | 12 | 7 | 13 | 1 | 9 |

Rate/1,000

| | 2002 | 2003 | 2004 | 2005 | 2006 | 2007 | 2008 | 2009 | 2009 CI |
|---------------------|------|------|------|------|------|------|------|------|-----------|
| West Midlands | 1.9 | 2.1 | 2.0 | 2.0 | 1.7 | 2.1 | 1.8 | 1.5 | 1.3 - 1.9 |
| West Mercia Cluster | 2.4 | 1.8 | 1.7 | 1.8 | 1.7 | 1.5 | 1.1 | 1.1 | 0.7 - 1.9 |
| Herefordshire | 1.9 | 0.0 | 1.2 | 3.0 | 2.9 | 0.6 | 1.7 | 0.5 | 0.1 - 3.1 |
| Shropshire | 3.3 | 2.5 | 0.4 | 1.8 | 2.5 | 1.7 | 1.0 | 1.4 | 0.5 - 3.5 |
| Telford&Wrekin | 1.6 | 2.1 | 1.4 | 0.5 | 1.4 | 0.4 | 3.2 | 0.4 | 0.1 - 2.5 |
| Worcestershire | 2.3 | 1.9 | 2.5 | 2.0 | 1.2 | 2.1 | 0.2 | 1.5 | 0.8 - 2.8 |

3 year moving averages

| | 02-04 | 03-05 | 04-06 | 05-07 | 06-08 | 07-09 |
|---------------------|-------|-------|-------|-------|-------|-------|
| West Midlands | 2.0 | 2.0 | 1.9 | 1.9 | 1.9 | 1.8 |
| West Mercia Cluster | 1.9 | 1.8 | 1.8 | 1.7 | 1.4 | 1.3 |
| Herefordshire | 1.0 | 1.4 | 2.4 | 2.1 | 1.7 | 0.9 |
| Shropshire | 2.0 | 1.6 | 1.6 | 2.0 | 1.8 | 1.4 |
| Telford&Wrekin | 1.7 | 1.3 | 1.1 | 0.8 | 1.7 | 1.4 |
| Worcestershire | 2.3 | 2.1 | 1.9 | 1.7 | 1.1 | 1.2 |



9 A: Neonatal deaths 2002-2009

Neonatal = birth to age 28 days

Numbers

| | 2002 | 2003 | 2004 | 2005 | 2006 | 2007 | 2008 | 2009 |
|---------------------|------|------|------|------|------|------|------|------|
| England and Wales* | 2129 | 2234 | 2223 | 2205 | 2331 | 2269 | 2299 | |
| West Midlands | 294 | 329 | 314 | 327 | 316 | 316 | 321 | 321 |
| West Mercia Cluster | 41 | 43 | 45 | 43 | 38 | 36 | 35 | 39 |
| Herefordshire | 3 | 1 | 5 | 9 | 6 | 2 | 5 | 2 |
| Shropshire | 11 | 13 | 5 | 5 | 11 | 7 | 9 | 11 |
| Telford&Wrekin | 5 | 6 | 9 | 6 | 7 | 4 | 12 | 6 |
| Worcestershire | 22 | 23 | 26 | 23 | 14 | 23 | 9 | 20 |

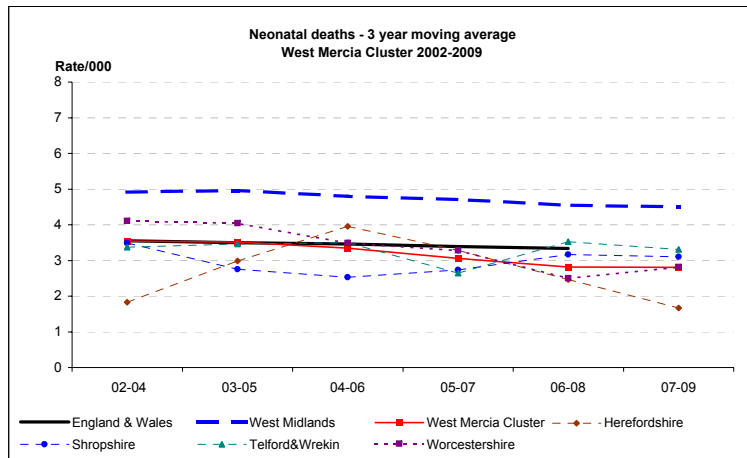
Rate/1,000

| | 2002 | 2003 | 2004 | 2005 | 2006 | 2007 | 2008 | 2009 | 2009 CI |
|---------------------|------|------|------|------|------|------|------|------|-----------|
| England and Wales* | 3.6 | 3.6 | 3.5 | 3.4 | 3.5 | 3.3 | 3.2 | | |
| West Midlands | 4.8 | 5.2 | 4.8 | 5.0 | 4.7 | 4.5 | 4.5 | 4.5 | 4.1 - 5.0 |
| West Mercia Cluster | 3.5 | 3.5 | 3.6 | 3.4 | 3.0 | 2.7 | 2.7 | 3.0 | 2.2 - 4.1 |
| Herefordshire | 1.9 | 0.6 | 3.0 | 5.4 | 3.5 | 1.1 | 2.9 | 1.1 | 0.3 - 4.0 |
| Shropshire | 4.0 | 4.6 | 1.8 | 1.8 | 4.0 | 2.4 | 3.1 | 3.7 | 2.1 - 6.7 |
| Telford&Wrekin | 2.6 | 3.1 | 4.3 | 2.9 | 3.3 | 1.8 | 5.5 | 2.7 | 1.2 - 5.8 |
| Worcestershire | 4.0 | 4.0 | 4.3 | 3.8 | 2.3 | 3.7 | 1.5 | 3.3 | 2.1 - 5.1 |

3 year moving averages

| | 02-04 | 03-05 | 04-06 | 05-07 | 06-08 | 07-09 |
|---------------------|-------|-------|-------|-------|-------|-------|
| England & Wales | 3.5 | 3.5 | 3.5 | 3.4 | 3.3 | |
| West Midlands | 4.9 | 5.0 | 4.8 | 4.7 | 4.6 | 4.5 |
| West Mercia Cluster | 3.5 | 3.5 | 3.3 | 3.1 | 2.8 | 2.8 |
| Herefordshire | 1.8 | 3.0 | 4.0 | 3.3 | 2.5 | 1.7 |
| Shropshire | 3.5 | 2.8 | 2.5 | 2.7 | 3.2 | 3.1 |
| Telford&Wrekin | 3.4 | 3.5 | 3.5 | 2.6 | 3.5 | 3.3 |
| Worcestershire | 4.1 | 4.0 | 3.5 | 3.3 | 2.5 | 2.8 |

*ONS



9 B: Neonatal Deaths 2002-2009 - CORRECTED

Corrected = excluding major congenital anomalies, <22 weeks gestation and <500g birthweight

Numbers

| | 2002 | 2003 | 2004 | 2005 | 2006 | 2007 | 2008 | 2009 |
|---------------------|------|------|------|------|------|------|------|------|
| West Midlands | 157 | 176 | 166 | 172 | 168 | 172 | 168 | 149 |
| West Mercia Cluster | 34 | 28 | 25 | 31 | 28 | 25 | 19 | 16 |
| Herefordshire | 3 | 0 | 3 | 7 | 6 | 1 | 3 | 1 |
| Shropshire | 10 | 11 | 2 | 5 | 10 | 6 | 4 | 5 |
| Telford&Wrekin | 4 | 4 | 4 | 4 | 3 | 2 | 7 | 1 |
| Worcestershire | 17 | 13 | 16 | 15 | 9 | 16 | 5 | 9 |

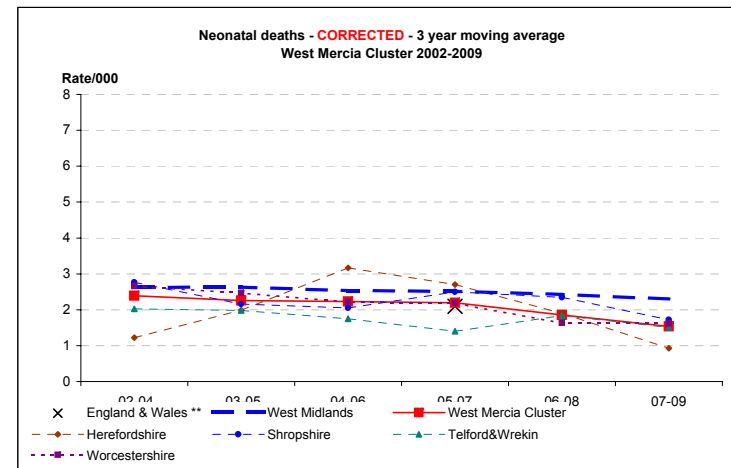
Rate/1,000

| | 2002 | 2003 | 2004 | 2005 | 2006 | 2007 | 2008 | 2009 | 2009 CI |
|---------------------|------|------|------|------|------|------|------|------|-----------|
| England and Wales** | | | | 2.1 | 2.3 | 2.0 | | | |
| West Midlands | 2.6 | 2.8 | 2.5 | 2.6 | 2.5 | 2.5 | 2.3 | 2.1 | 1.8 - 2.5 |
| West Mercia Cluster | 2.9 | 2.3 | 2.0 | 2.5 | 2.2 | 1.9 | 1.5 | 1.2 | 0.8 - 2.0 |
| Herefordshire | 1.9 | 0.0 | 1.8 | 4.2 | 3.5 | 0.6 | 1.7 | 0.5 | 0.1 - 3.1 |
| Shropshire | 3.6 | 3.9 | 0.7 | 1.8 | 3.6 | 2.1 | 1.4 | 1.7 | 0.7 - 4.0 |
| Telford&Wrekin | 2.1 | 2.1 | 1.9 | 1.9 | 1.4 | 0.9 | 3.2 | 0.4 | 0.1 - 2.5 |
| Worcestershire | 3.1 | 2.3 | 2.7 | 2.5 | 1.5 | 2.6 | 0.8 | 1.5 | 0.8 - 2.8 |

3 year moving averages

| | 02-04 | 03-05 | 04-06 | 05-07 | 06-08 | 07-09 |
|---------------------|-------|-------|-------|-------|-------|-------|
| England & Wales ** | | | | 2.1 | | |
| West Midlands | 2.6 | 2.6 | 2.5 | 2.5 | 2.4 | 2.3 |
| West Mercia Cluster | 2.4 | 2.3 | 2.2 | 2.2 | 1.9 | 1.5 |
| Herefordshire | 1.2 | 2.0 | 3.2 | 2.7 | 1.9 | 0.9 |
| Shropshire | 2.8 | 2.2 | 2.0 | 2.5 | 2.3 | 1.7 |
| Telford&Wrekin | 2.0 | 2.0 | 1.7 | 1.4 | 1.8 | 1.5 |
| Worcestershire | 2.7 | 2.5 | 2.2 | 2.2 | 1.6 | 1.6 |

**CEMACH



x = England & Wales 3 y adjusted average from CEMACH

10 A: Perinatal Deaths 2002-2009

Perinatal = stillbirths and early neonatal deaths

Numbers

| | 2002 | 2003 | 2004 | 2005 | 2006 | 2007 | 2008 | 2009 |
|---------------------|------|------|------|------|------|------|------|------|
| England and Wales* | 4993 | 5291 | 5231 | 5154 | 5340 | 5347 | 5380 | |
| West Midlands | 625 | 661 | 638 | 673 | 637 | 666 | 674 | 656 |
| West Mercia Cluster | 100 | 94 | 102 | 102 | 92 | 102 | 93 | 89 |
| Herefordshire | 14 | 6 | 8 | 14 | 17 | 14 | 8 | 7 |
| Shropshire | 17 | 26 | 15 | 12 | 20 | 20 | 25 | 20 |
| Telford&Wrekin | 20 | 15 | 28 | 14 | 17 | 17 | 25 | 18 |
| Worcestershire | 49 | 47 | 51 | 62 | 38 | 51 | 35 | 44 |

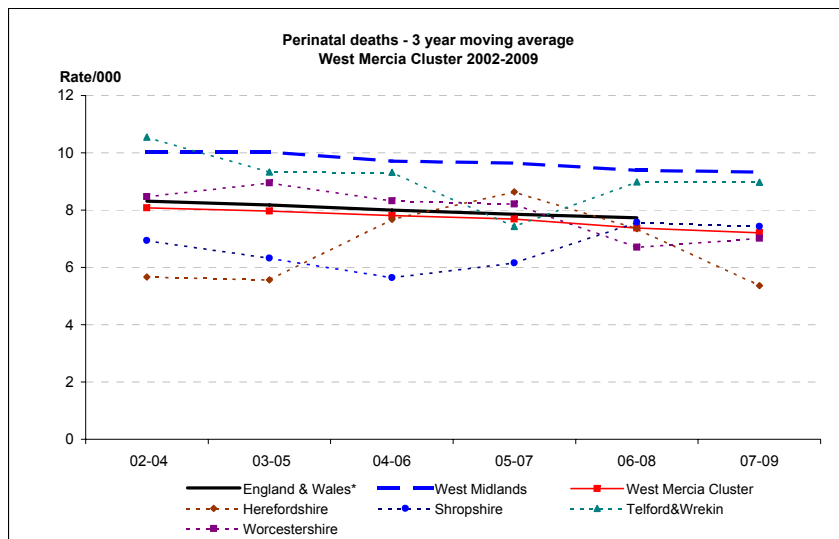
Rate/1,000

| | 2002 | 2003 | 2004 | 2005 | 2006 | 2007 | 2008 | 2009 | 2009 CI |
|---------------------|------|------|------|------|------|------|------|------|------------|
| England and Wales* | 8.3 | 8.5 | 8.1 | 7.9 | 7.9 | 7.7 | 7.6 | | |
| West Midlands | 10.2 | 10.3 | 9.6 | 10.1 | 9.4 | 9.5 | 9.3 | 9.2 | 8.5 - 9.9 |
| West Mercia Cluster | 8.5 | 7.7 | 8.1 | 8.1 | 7.2 | 7.7 | 7.1 | 6.8 | 5.5 - 8.3 |
| Herefordshire | 8.9 | 3.6 | 4.7 | 8.4 | 9.9 | 7.7 | 4.6 | 3.8 | 1.9 - 7.9 |
| Shropshire | 6.2 | 9.1 | 5.4 | 4.3 | 7.2 | 6.9 | 8.6 | 6.8 | 4.4 - 10.4 |
| Telford&Wrekin | 10.3 | 7.8 | 13.2 | 6.8 | 7.9 | 7.6 | 11.5 | 7.9 | 5.0 - 12.5 |
| Worcestershire | 8.8 | 8.1 | 8.5 | 10.2 | 6.3 | 8.2 | 5.7 | 7.2 | 5.4 - 9.7 |

3 year moving averages

| | 02-04 | 03-05 | 04-06 | 05-07 | 06-08 | 07-09 |
|---------------------|-------|-------|-------|-------|-------|-------|
| England & Wales* | 8.3 | 8.2 | 8.0 | 7.9 | 7.7 | |
| West Midlands | 10.0 | 10.0 | 9.7 | 9.6 | 9.4 | 9.3 |
| West Mercia Cluster | 8.1 | 8.0 | 7.8 | 7.7 | 7.4 | 7.2 |
| Herefordshire | 5.7 | 5.6 | 7.7 | 8.6 | 7.4 | 5.4 |
| Shropshire | 6.9 | 6.3 | 5.6 | 6.2 | 7.6 | 7.4 |
| Telford&Wrekin | 10.5 | 9.3 | 9.3 | 7.4 | 9.0 | 9.0 |
| Worcestershire | 8.5 | 8.9 | 8.3 | 8.2 | 6.7 | 7.0 |

*ONS



10 B: Perinatal Deaths 2002-2009 - CORRECTED

Corrected = excluding major congenital anomalies, <22 weeks gestation and <500g birthweight

Numbers

| | 2002 | 2003 | 2004 | 2005 | 2006 | 2007 | 2008 | 2009 |
|---------------------|------|------|------|------|------|------|------|------|
| West Midlands | 400 | 418 | 408 | 442 | 385 | 428 | 420 | 369 |
| West Mercia Cluster | 78 | 60 | 75 | 76 | 68 | 77 | 54 | 53 |
| Herefordshire | 13 | 2 | 7 | 10 | 13 | 11 | 6 | 4 |
| Shropshire | 15 | 19 | 12 | 12 | 15 | 17 | 14 | 12 |
| Telford&Wrekin | 15 | 10 | 17 | 11 | 10 | 13 | 15 | 9 |
| Worcestershire | 35 | 29 | 39 | 43 | 30 | 36 | 19 | 28 |

Rate/1,000

| | 2002 | 2003 | 2004 | 2005 | 2006 | 2007 | 2008 | 2009 | 2009 CI |
|---------------------|------|------|------|------|------|------|------|------|-----------|
| West Midlands | 6.5 | 6.5 | 6.2 | 6.7 | 5.7 | 6.1 | 5.8 | 5.2 | 4.7 - 5.7 |
| West Mercia Cluster | 6.6 | 4.9 | 6.0 | 6.0 | 5.3 | 5.8 | 4.1 | 4.0 | 3.1 - 5.3 |
| Herefordshire | 8.2 | 1.2 | 4.1 | 6.0 | 7.6 | 6.0 | 3.4 | 2.2 | 0.9 - 5.6 |
| Shropshire | 5.5 | 6.7 | 4.3 | 4.3 | 5.4 | 5.9 | 4.8 | 4.1 | 2.3 - 7.1 |
| Telford&Wrekin | 7.8 | 5.2 | 8.0 | 5.3 | 4.7 | 5.8 | 6.9 | 4.0 | 2.1 - 7.5 |
| Worcestershire | 6.3 | 5.0 | 6.5 | 7.1 | 5.0 | 5.8 | 3.1 | 4.6 | 3.2 - 6.6 |

3 year moving averages

| | 02-04 | 03-05 | 04-06 | 05-07 | 06-08 | 07-09 |
|---------------------|-------|-------|-------|-------|-------|-------|
| West Midlands | 6.4 | 6.4 | 6.2 | 6.1 | 5.9 | 5.7 |
| West Mercia Cluster | 5.8 | 5.6 | 5.8 | 5.7 | 5.1 | 4.7 |
| Herefordshire | 4.4 | 3.8 | 5.9 | 6.5 | 5.7 | 3.9 |
| Shropshire | 5.5 | 5.1 | 4.7 | 5.2 | 5.4 | 4.9 |
| Telford&Wrekin | 7.0 | 6.2 | 6.0 | 5.3 | 5.8 | 5.5 |
| Worcestershire | 5.9 | 6.2 | 6.2 | 5.9 | 4.6 | 4.5 |

